

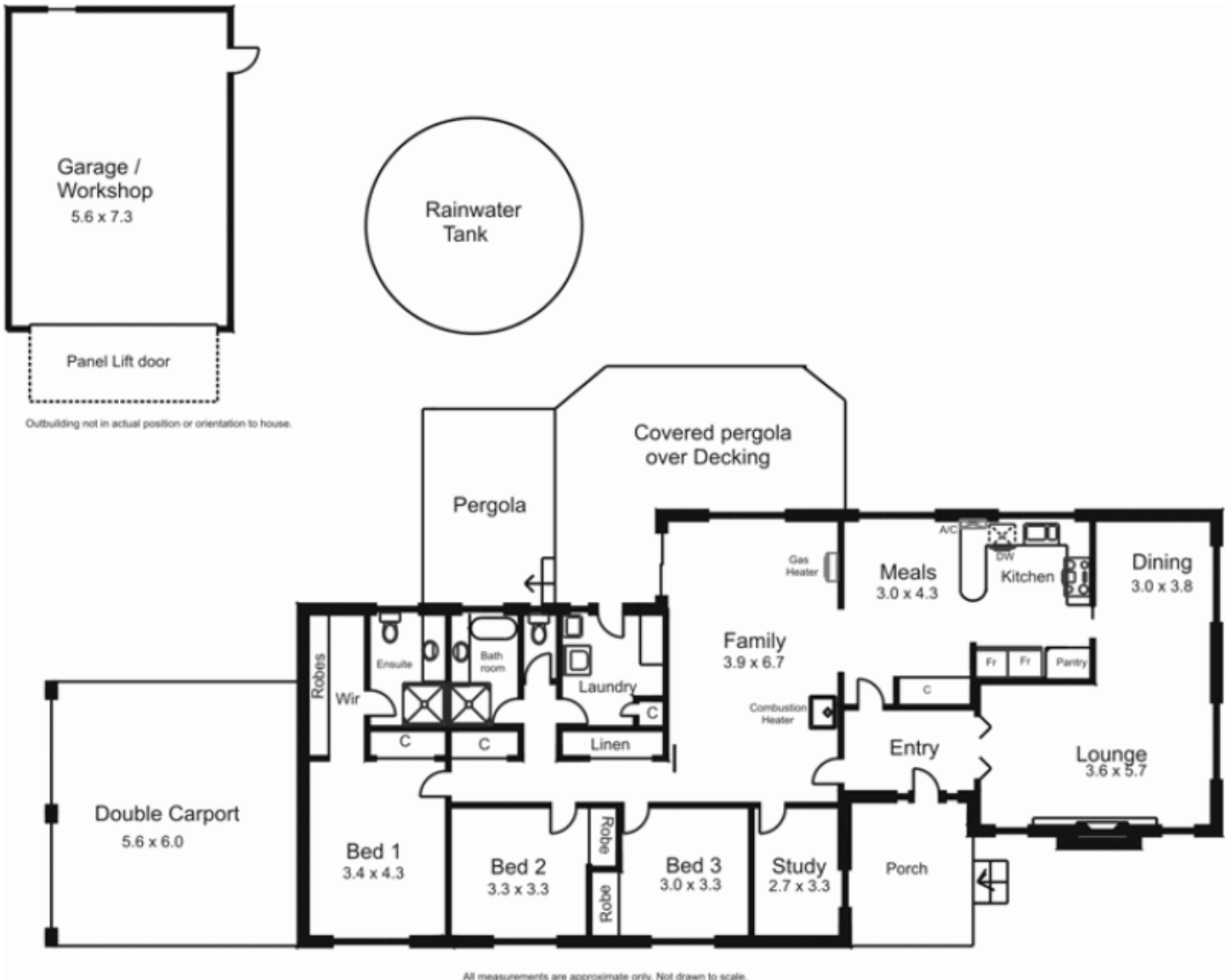


**70 McGeorge Road GISBORNE SOUTH VIC**

3  2  4 

Fantastic larger allotment offers multi use potential. Equestrian, organic farming, vineyard or just plenty of room to move. The home comprises three bedrooms, study with built in desk, kitchen/meals, large formal lounge/dining and family room. Undercover decking to the rear looks majestically over all of the property. Unbeatable blue chip commuter location. Gisborne and Sunbury only minutes away with Melbourne CBD only 45 min. Start your rural lifestyle today with this special property!

**Building Size** : 22 sqm  
**Land Size** : 64590 sqm  
**View** : <https://www.kennedyandhunt.com.au/sale/vic/macedon-ranges/gisborne-south/residential/acreagesemirural/5848388>



All measurements are approximate only. Not drawn to scale.