

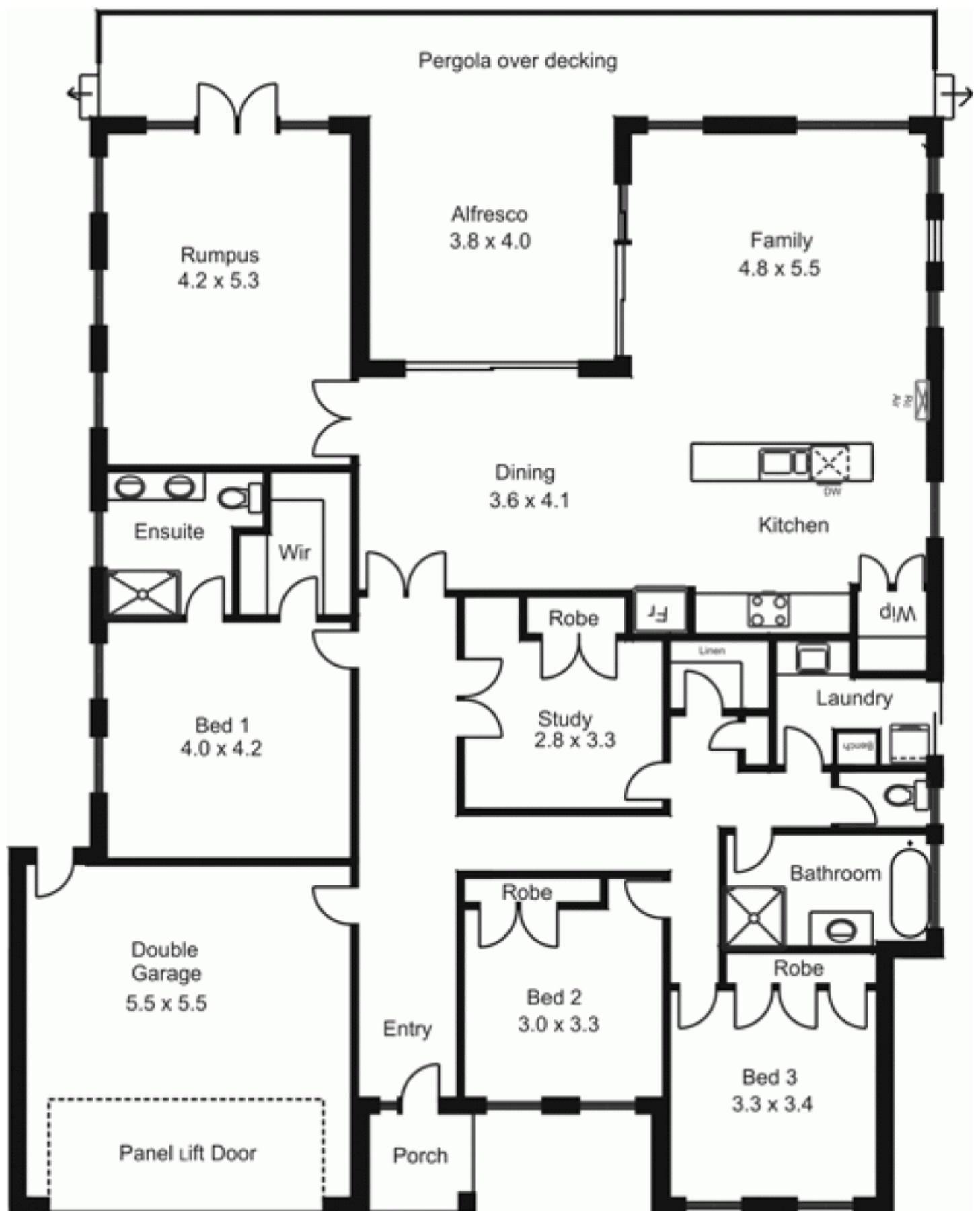


3 Pindara Place GISBORNE VIC

3 2 2

North facing living areas, magnificent views, immaculate presentation, and fabulous alfresco dining are all available here! Accommodation offers three bedrooms and study, huge kitchen/meals/living space, separate rumpus room, ensuite, bathroom and laundry. Features include quality fittings, 2.5m ceilings, central heating, stainless steel appliances, split system reverse cycle air conditioner and rain water tank. Integrated double garage with remote controlled entry. Landscaped garden and paved driveway. An appealing property in a great court location.

Building Size : 22 sqm
Land Size : 967 sqm
View : <https://www.kennedyandhunt.com.au/sale/vic/macedon-ranges/gisborne/residential/house/5848392>



All measurements are approximate only. Not drawn to scale.