

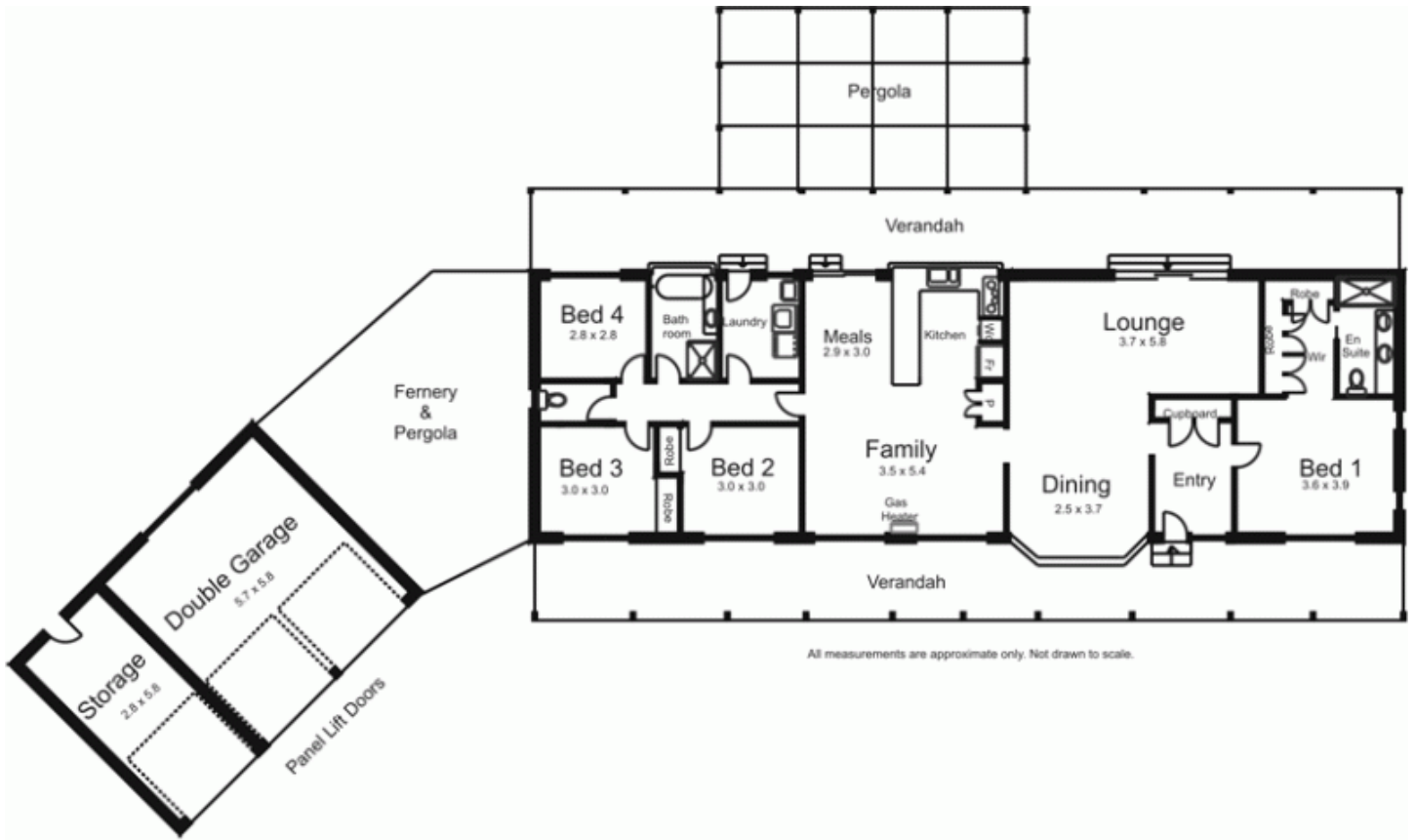


209 Sheedy Road GISBORNE VIC

4 2 4

Conveniently located to township and facilities with easy access to Calder Freeway. Accommodation includes 4 bedrooms, 2 bathrooms, 2 living areas, formal entry and verandahs front & rear. Stables, undercover yard, hay shed, tack & feed rooms, double garage and carport. 5 paddocks, laneway. Tree line boundaries well established gardens.

Type : Acreage/Semi-Rural
Building Size : 19 sqm
View : <https://www.kennedyandhunt.com.au/sale/vic/macedon-ranges/gisborne/residential/acreagesemirural/5848393>



All measurements are approximate only. Not drawn to scale.

Outbuilding not in actual position to house.

