

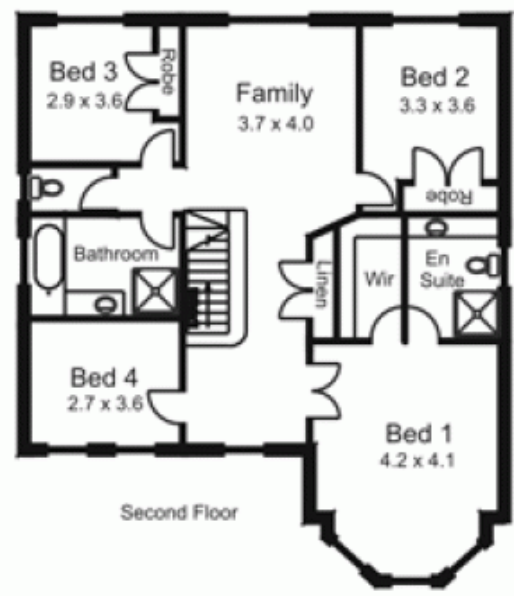
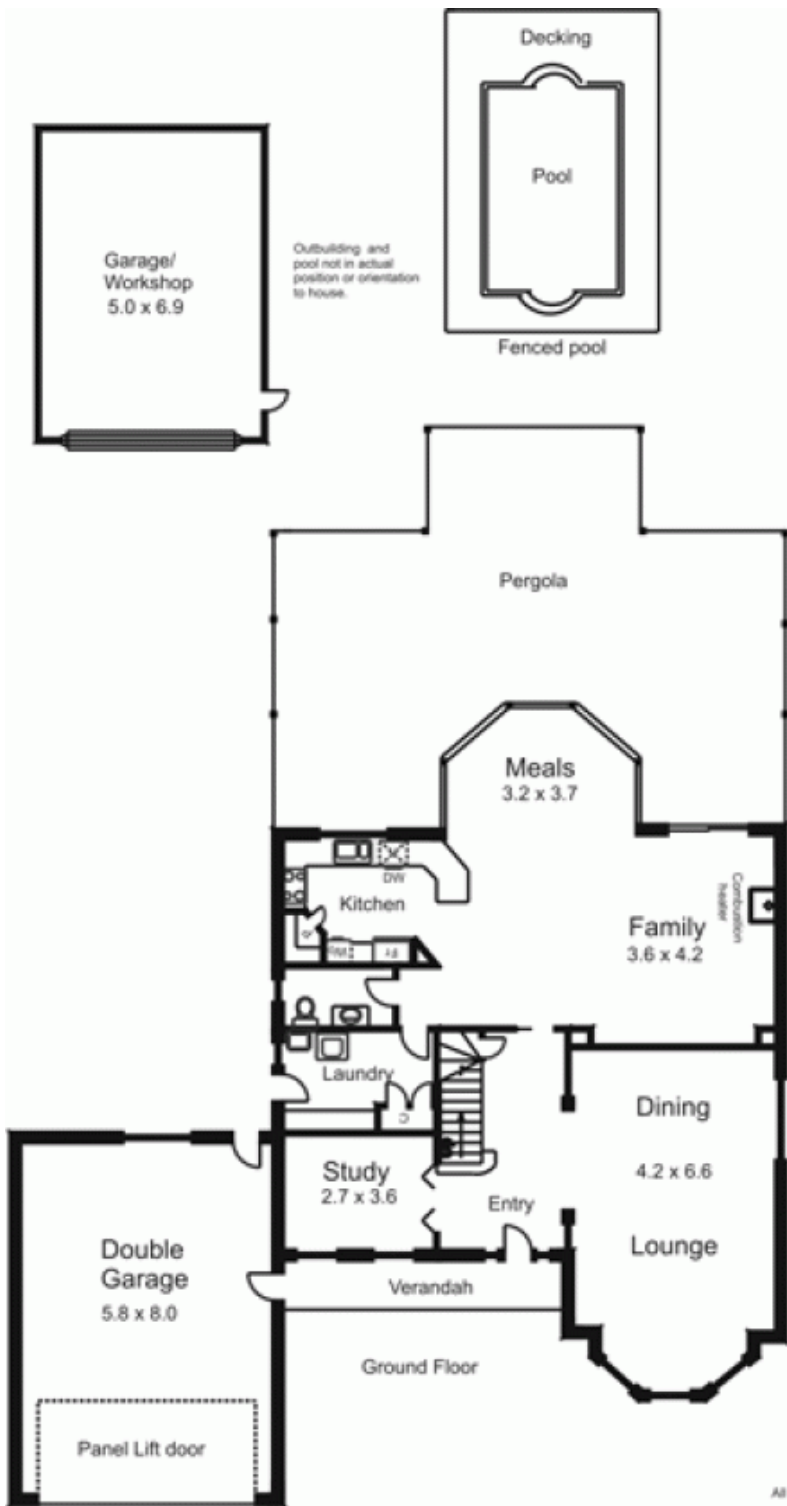


19 Dalray Crescent NEW GISBORNE VIC

4 2 2

Immaculately presented and absolutely complete inside and out. A dream home for the fun loving family that likes to entertain on a grand scale. Accommodation 4 bedrooms, study, full ensuite, formal lounge/dining, kitchen/meals/family and upstairs studio/playroom. Features natural gas ducted heating, cooling, quality soft furnishings, polished floors and magnificent pergola over looking sparkling pool and landscaped gardens. Including integrated garage, separate shed and reticulated tank watering system. Just move in and enjoy.

Type : House
Building Size : 29 sqm
Land Size : 1590 sqm
View : <https://www.kennedyandhunt.com.au/sale/vic/macedon-ranges/new-gisborne/residential/house/5848394>



All measurements are approximate only.
Not drawn to scale.