

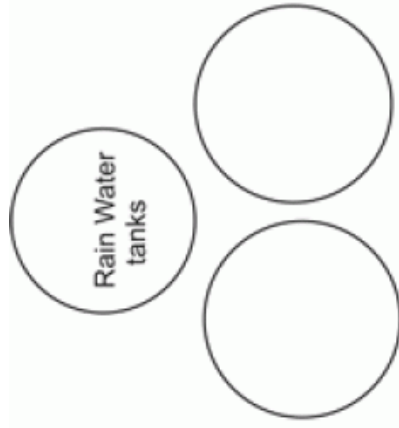


68 Mount Gisborne Road GISBORNE VIC

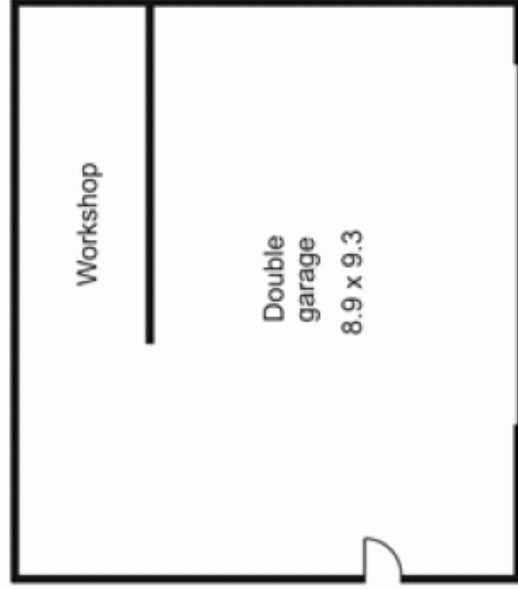
4 2 2

Rendered brickwork and extensive glazing combine beautifully to provide contemporary charm within a mature sheltered garden. Comprising 4 large bedrooms, study/retreat, renovated ensuite and bathroom, bright family room opening onto extensive decking, kitchen/meals and lounge/dining. Includes air conditioning, and slow combustion heating. Natural gas. Town water, tank supply and bore. A unique home in a special setting.

Building Size : 23 sqm
Land Size : 3218 sqm
View : <https://www.kennedyandhunt.com.au/sale/vic/macedon-ranges/gisborne/residential/house/5848396>



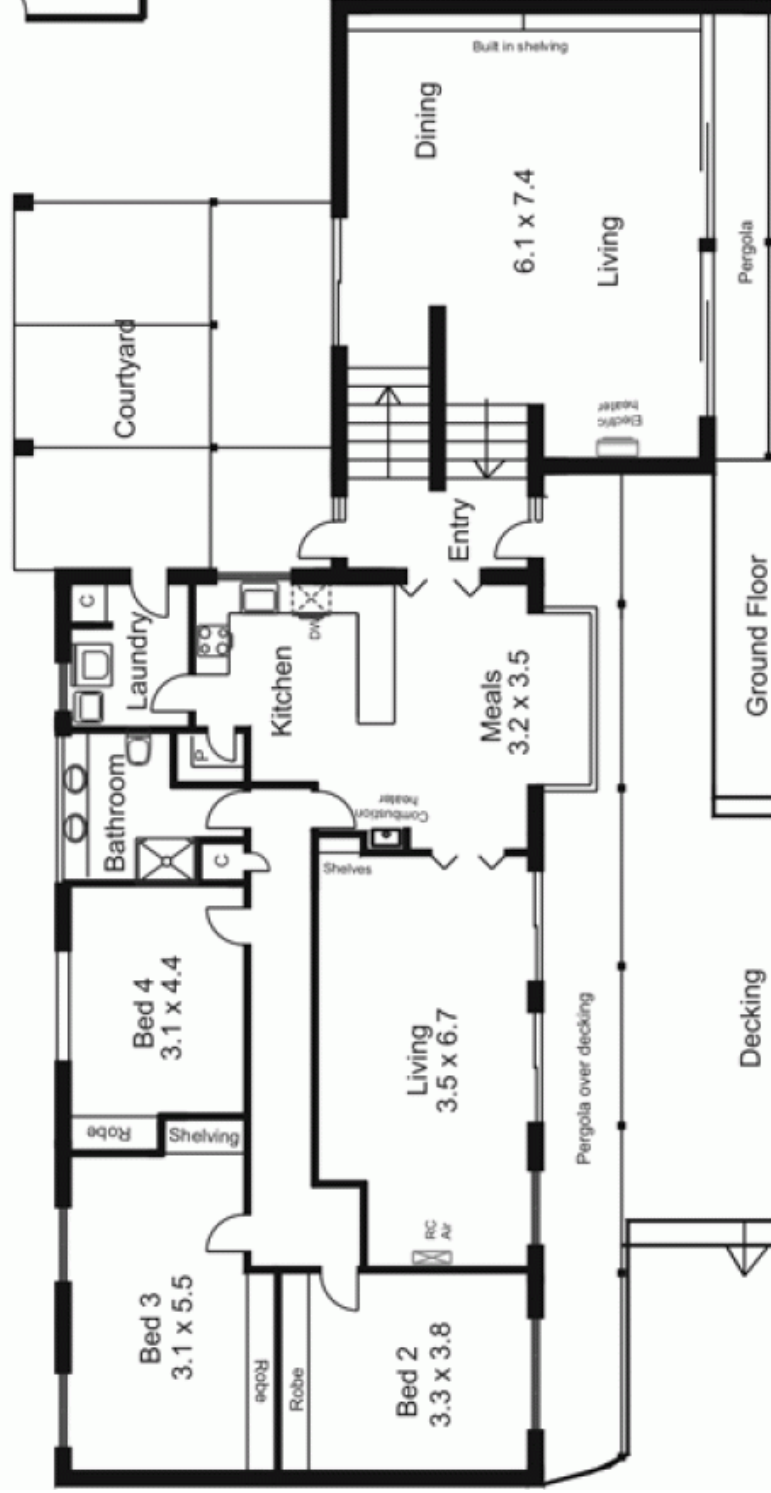
Rain Water tanks



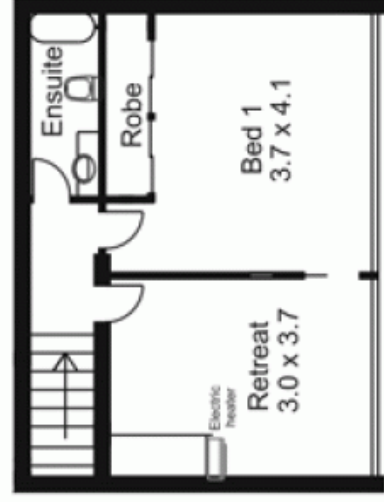
Workshop

Double garage
8.9 x 9.3

Outbuilding not in actual position to house.



Ground Floor



First Floor

All measurements are approximate only.
Not drawn to scale.