


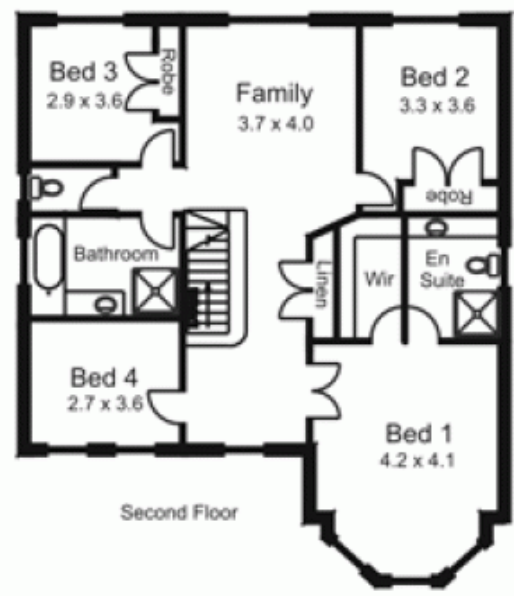
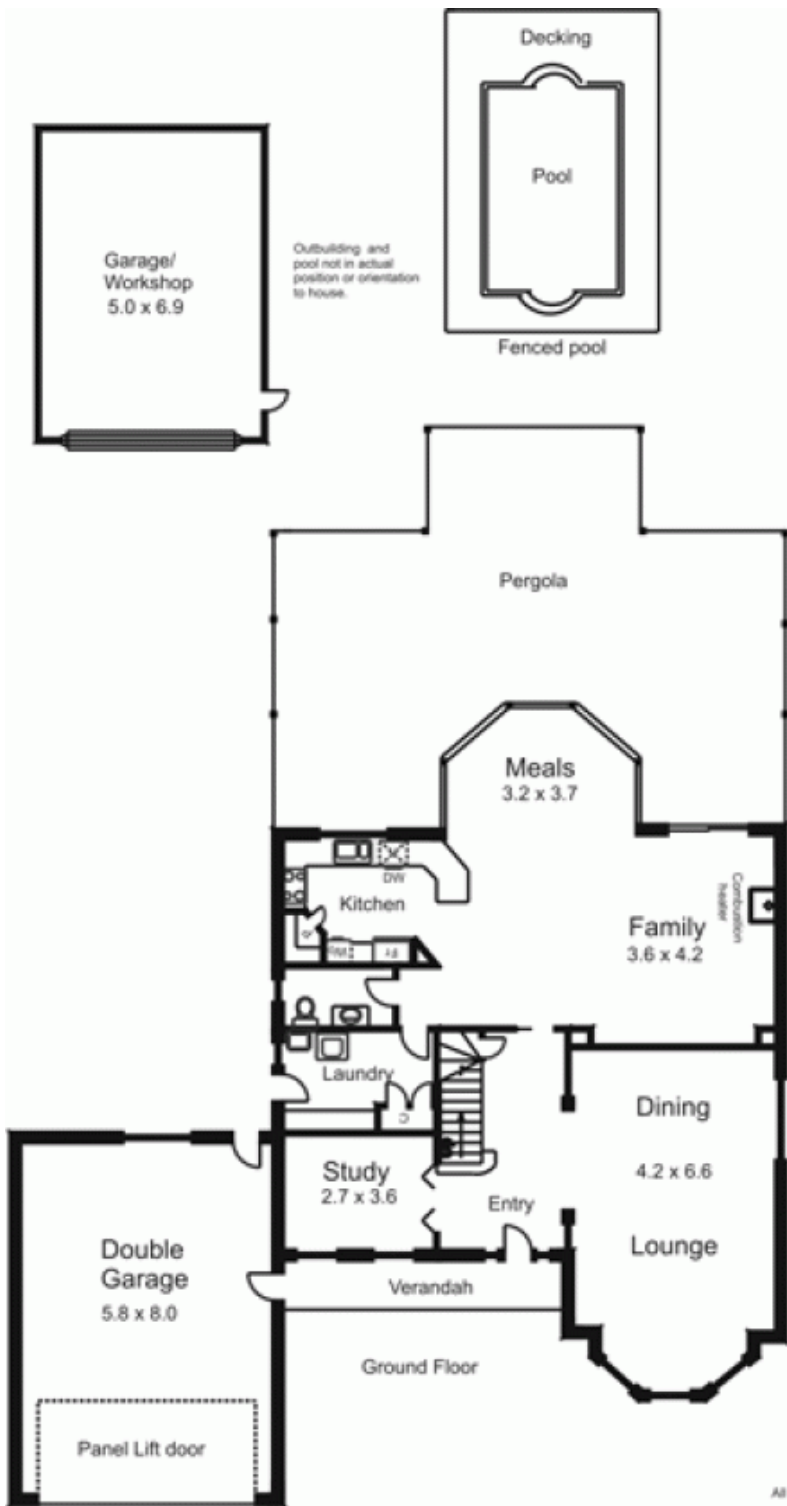




19 Dalray Crescent GISBORNE VIC

4  2  4 

**Type** : House  
**Building Size** : 29 sqm  
**Land Size** : 1590 sqm  
**View** : <https://www.kennedyandhunt.com.au/sale/vic/macedon-ranges/gisborne/residential/house/5848398>



All measurements are approximate only.  
Not drawn to scale.