

#### 44 Wyralla Crescent GISBORNE VIC

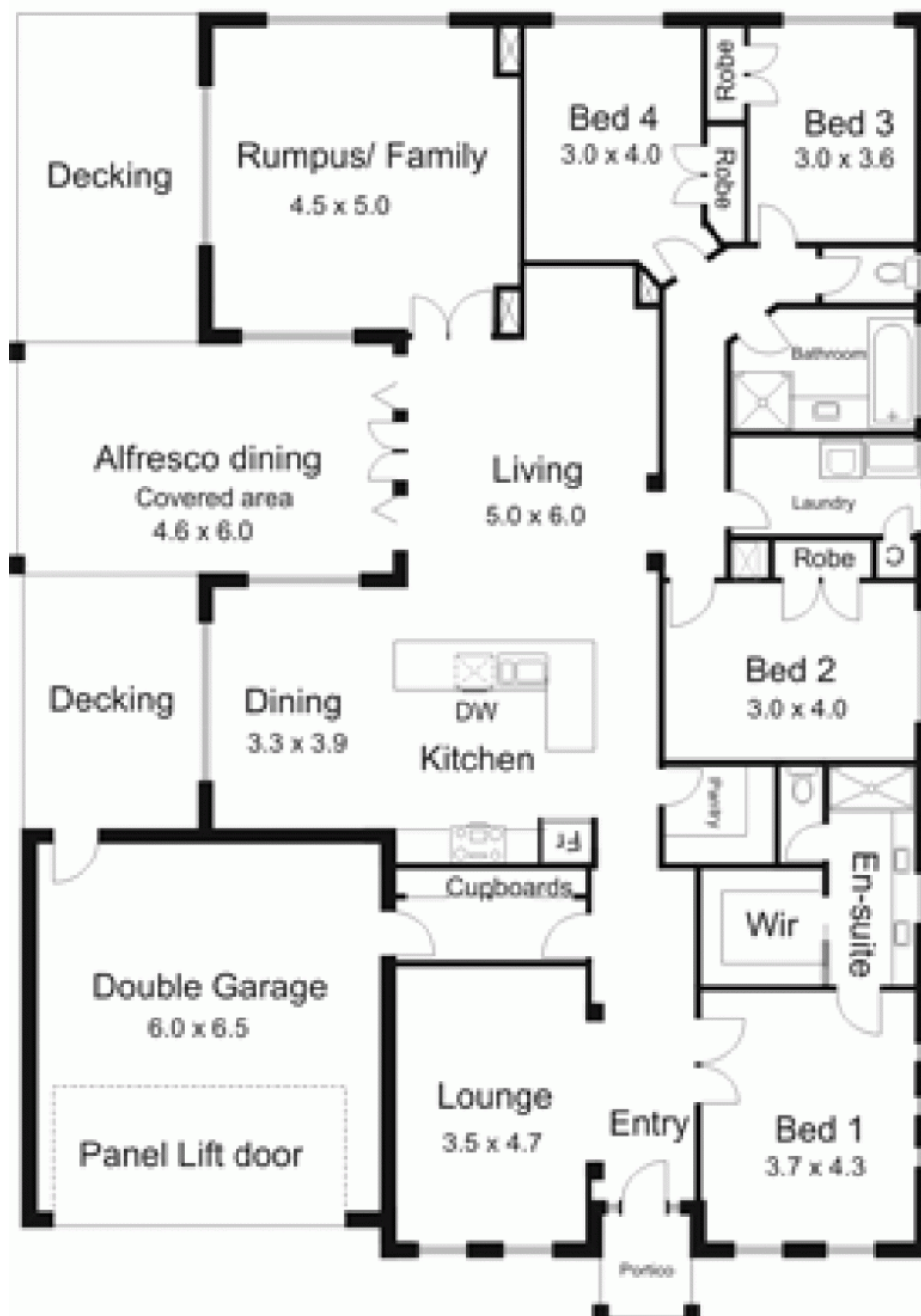
4 2 2

Beautifully designed home enjoys a clean contemporary feel. Generous accommodation includes four bedrooms, formal lounge, open plan kitchen/meals/living and large separate rumpus/family room. North facing living extends to excellent alfresco area and the views beyond. Integrated double garage. Fantastic free flowing floorplan for complete family enjoyment. A new standard of living awaits!

**Building Size** : 25 sqm  
**Land Size** : 1509 sqm  
**View** : <https://www.kennedyandhunt.com.au/sale/vic/macedon-ranges/gisborne/residential/house/5848407>



Outbuilding not in actual position to house.



All measurements are approximate only. Not drawn to scale.