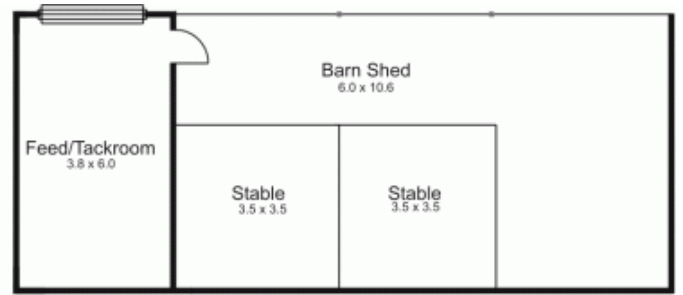
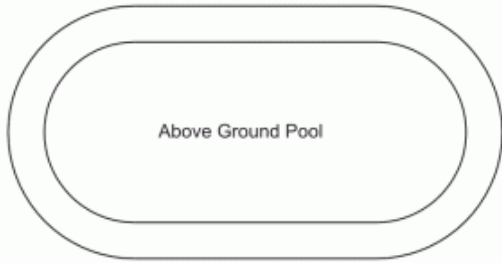


10 Macedon Close GISBORNE VIC

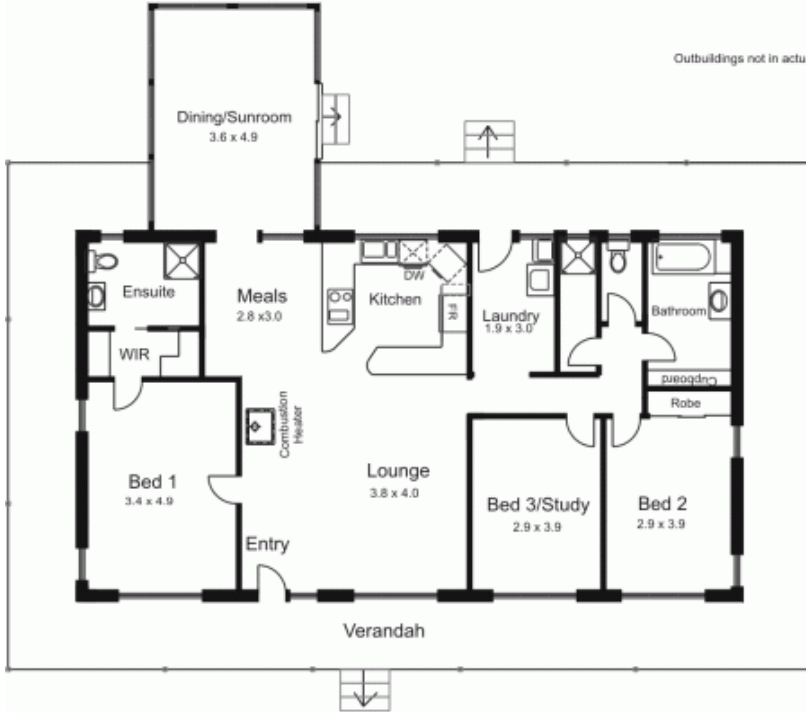
3 2 2

Just a few minutes from Gisborne township. Comfortable and well appointed homestead style 3 bedroom residence with refurbished ensuite and sep. rumpus room. Equestrian facilities include 4 bay shed/loose boxes/tack & feed, 6 paddocks/laneway access, 5 paddock shelters, garage/workshop. Includes town water & sealed road. Get ready to ride!

Building Size : 15 sqm
View : <https://www.kennedyandhunt.com.au/sale/vic/macedon-ranges/gisborne/residential/acreagesemirural/5848411>



Outbuildings not in actual position or orientation to house



All measurements are approximate only. Not drawn to scale