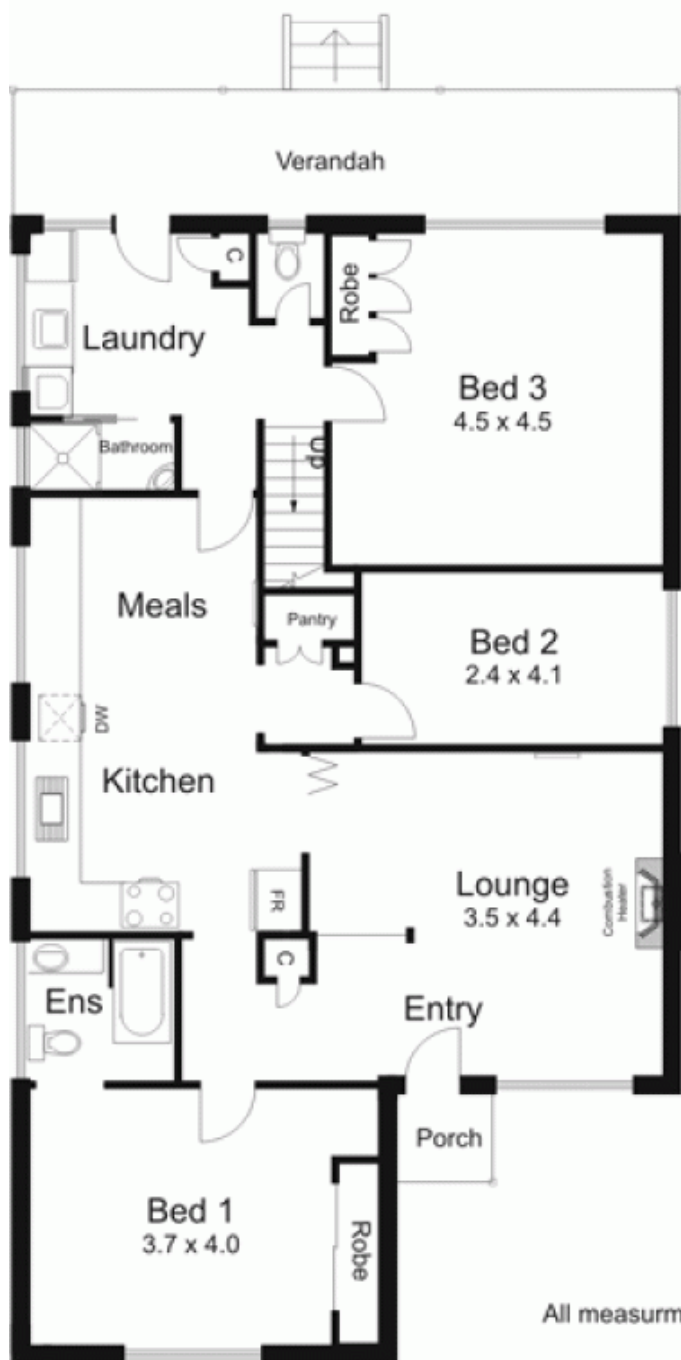


12 Woodworth Street NEW GISBORNE VIC

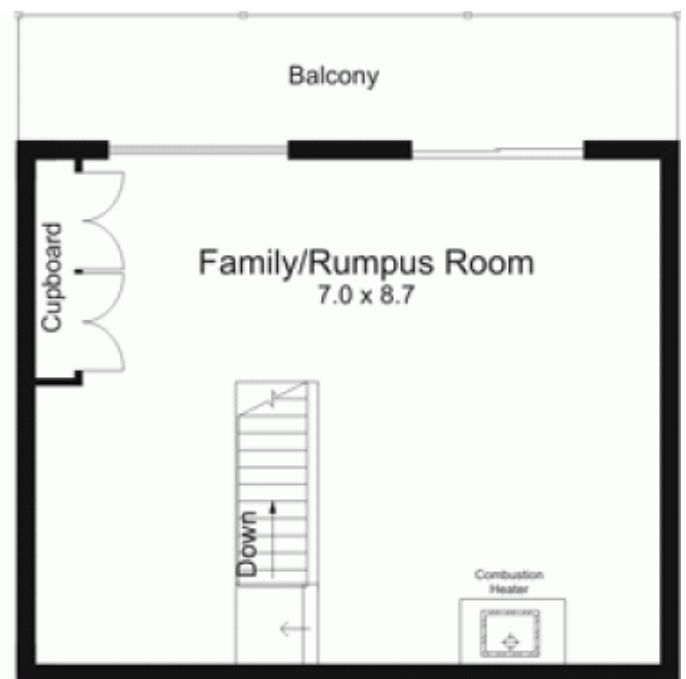
3 2 2

Quiet location offers three bedrooms, lounge, kitchen/meals and upstairs family/rumpus room that leads to a fantastic balcony. Features include natural gas, established garden, picket fence and double steel garage. A wonderful chance to purchase an interesting home close to parks, sporting facilities, station, schools and Tavern!

Building Size : 17 sqm
Land Size : 780 sqm
View : <https://www.kennedyandhunt.com.au/sale/vic/macedon-ranges/new-gisborne/residential/house/5848413>

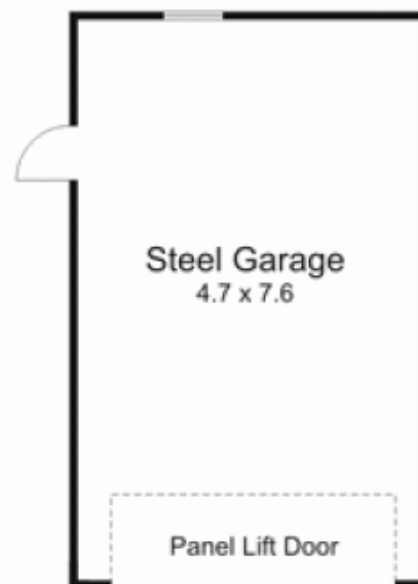


Ground Level



Upper Level

Outbuildings not in actual position or orientation to house.



All measurments are approximate. Not drawn to scale.