

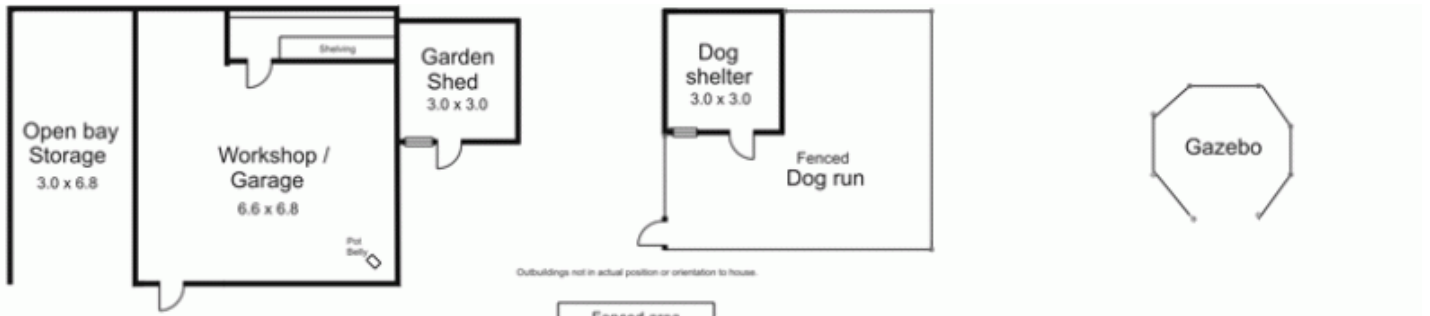


64 Panorama Drive GISBORNE VIC

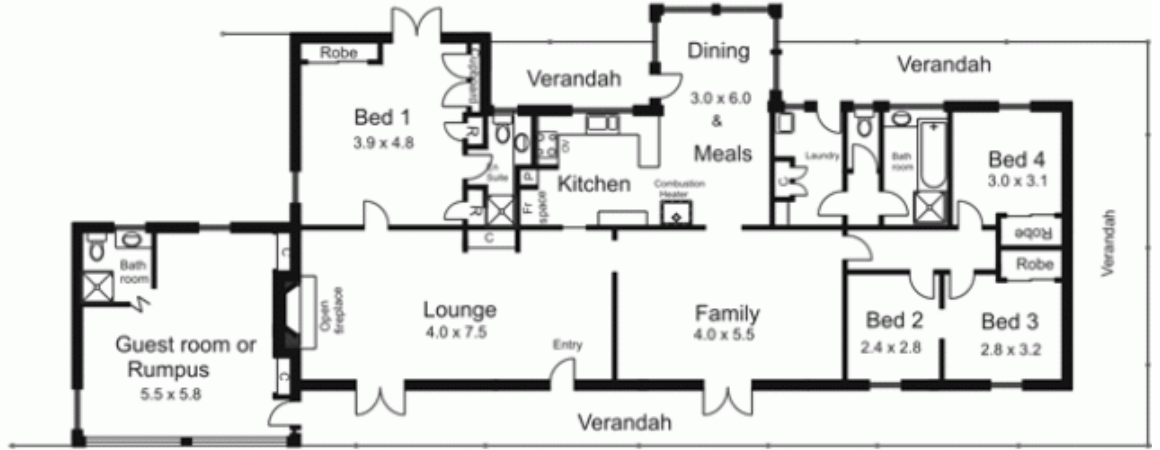
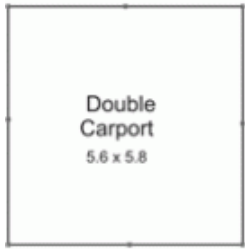
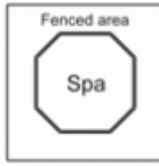
3 3 2

A joy for the whole family! The property offers a character filled home, extensive shedding, large carport, tennis court with gazebo and pony paddocks. Accommodation provides three bedrooms plus study (fourth bedroom) ensuite, lounge, dining and kitchen/meals area adjoining attractive conservatory style sunroom. Separate studio/guest accommodation with ensuite. Features include ducted heating, evaporative cooling, open fire place, timber floors and much more. A country lifestyle close to all amenities.

Type : Acreage/Semi-Rural
Building Size : 25 sqm
View : <https://www.kennedyandhunt.com.au/sale/vic/macedon-ranges/gisborne/residential/acreagesemirural/5848415>



Outbuildings not in actual position or orientation to house.



All measurements are approximate only.
Not drawn to scale.

