

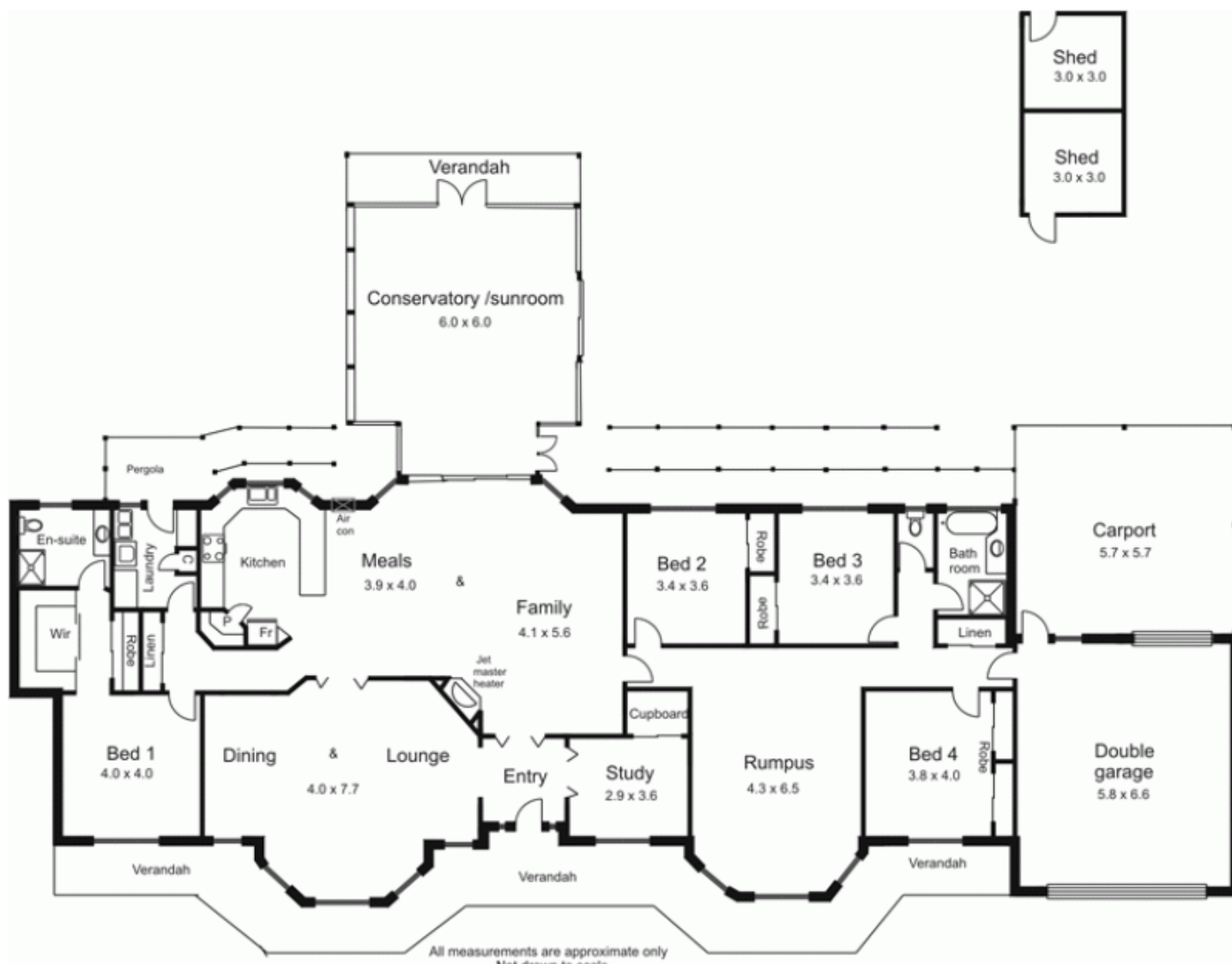


15 Ormerod Court GISBORNE VIC

5 2 3

Offers the ultimate in family living and lavish indoor/outdoor entertaining. Comprising 4 large bedrooms, study/5th bedroom, ensuite and 4 living areas. Features polished timber floors, high ceilings, natural gas heating, extensive mature landscaping and floodlit "mod" grass tennis court. A lifestyle property in a peaceful environment.

Building Size : 33 sqm
Land Size : 4000 sqm
View : <https://www.kennedyandhunt.com.au/sale/vic/macedon-ranges/gisborne/residential/house/5848429>



All measurements are approximate only
Not drawn to scale.