

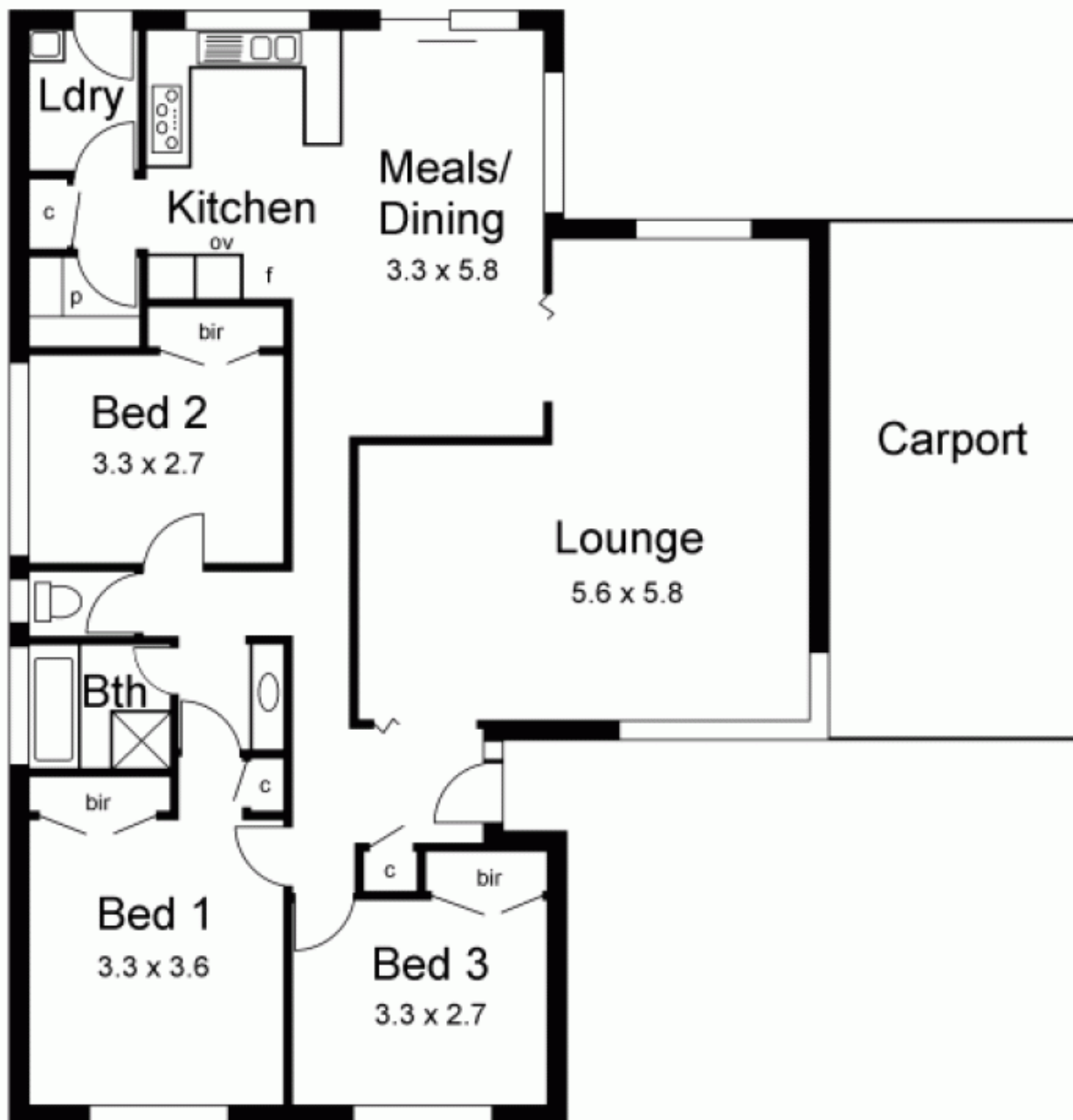


15 Scenic Court GISBORNE VIC

3 1 1

Ideal first home or investment property offers three bedrooms, large lounge/dining room and kitchen/meals/living area. Impressive pergola with new paving provides quality outdoor entertaining. Freshened up throughout this home provides an ideal opportunity for someone to break out of the rental cycle or an investor wishing to strengthen their property portfolio.

Type : House
Building Size : 14 sqm
Land Size : 697 sqm
View : <https://www.kennedyandhunt.com.au/sale/vic/macedon-ranges/gisborne/residential/house/5848433>



All measurements are approximate