



3 Carbine Court NEW GISBORNE VIC

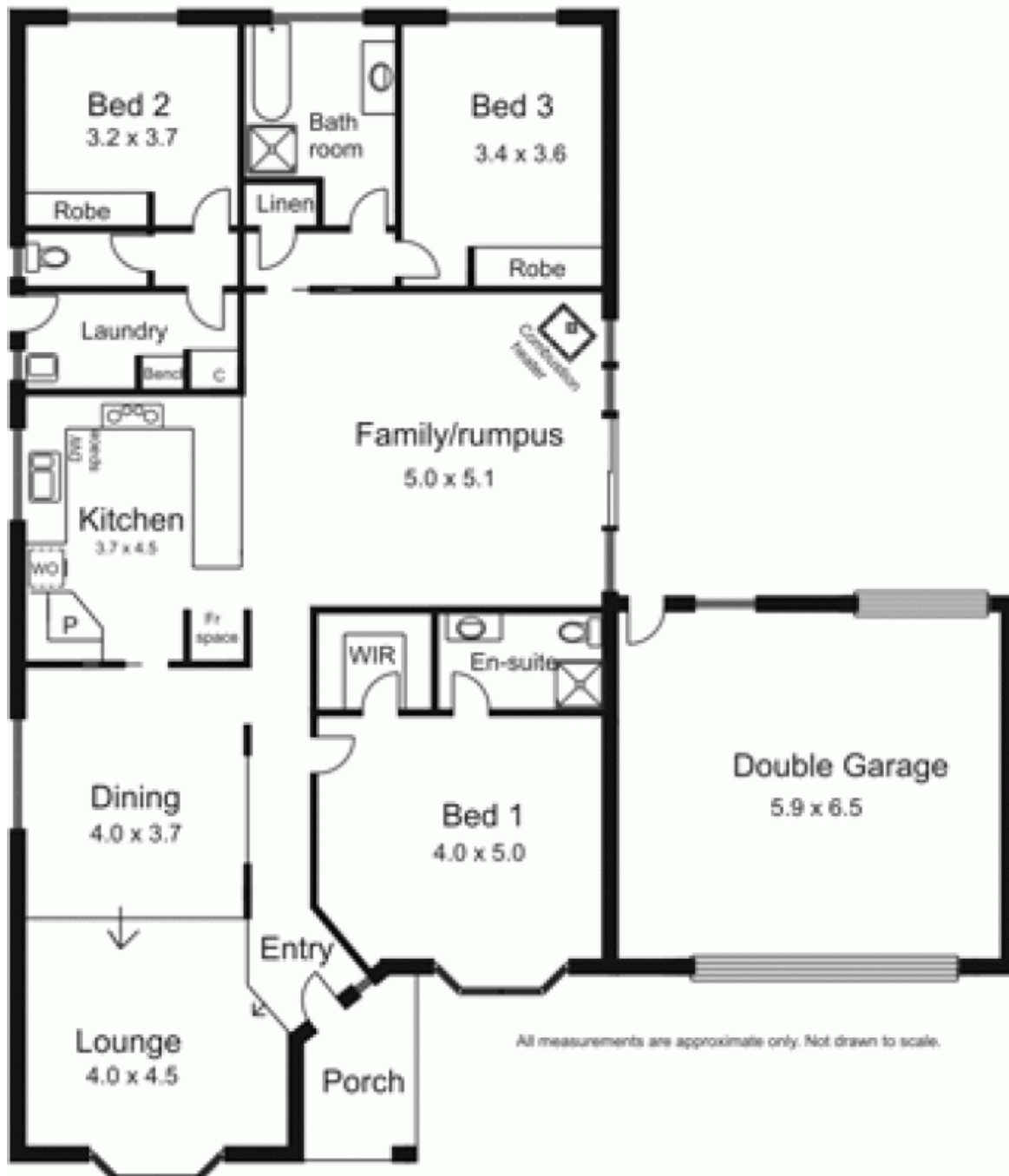
3 1 2

Spacious home offers 3 bedrooms, ensuite, family bathroom, lounge/diningroom, modern kitchen adjoining family room with direct access to extensive paved outdoor living area. Double garage and large workshop/shed. Ideal for city and Melbourne International Airport commuter via Calder Freeway.

Type : House
Building Size : 22 sqm
Land Size : 851 sqm
View : <https://www.kennedyandhunt.com.au/sale/vic/macedon-ranges/new-gisborne/residential/house/5848439>



Outbuilding not in actual position to house.



All measurements are approximate only. Not drawn to scale.