



**28 Dalray Crescent NEW GISBORNE VIC**

4 2 4

Superbly presented 4 bedroom home includes 2 bathrooms, spacious galley style kitchen, familyroom, rumpus room and formal lounge. Large under cover pergola area for outside entertaining. Natural gas cent. heating, reverse cycle air cond. & slow combustion heater. Integrated double garage, Colorbond shed approx. 6m x 9m, cubby house and garden shed. Beautiful landscaped gardens.

**Building Size** : 21 sqm  
**Land Size** : 1200 sqm  
**View** : <https://www.kennedyandhunt.com.au/sale/vic/macedon-ranges/new-gisborne/residential/house/5848447>

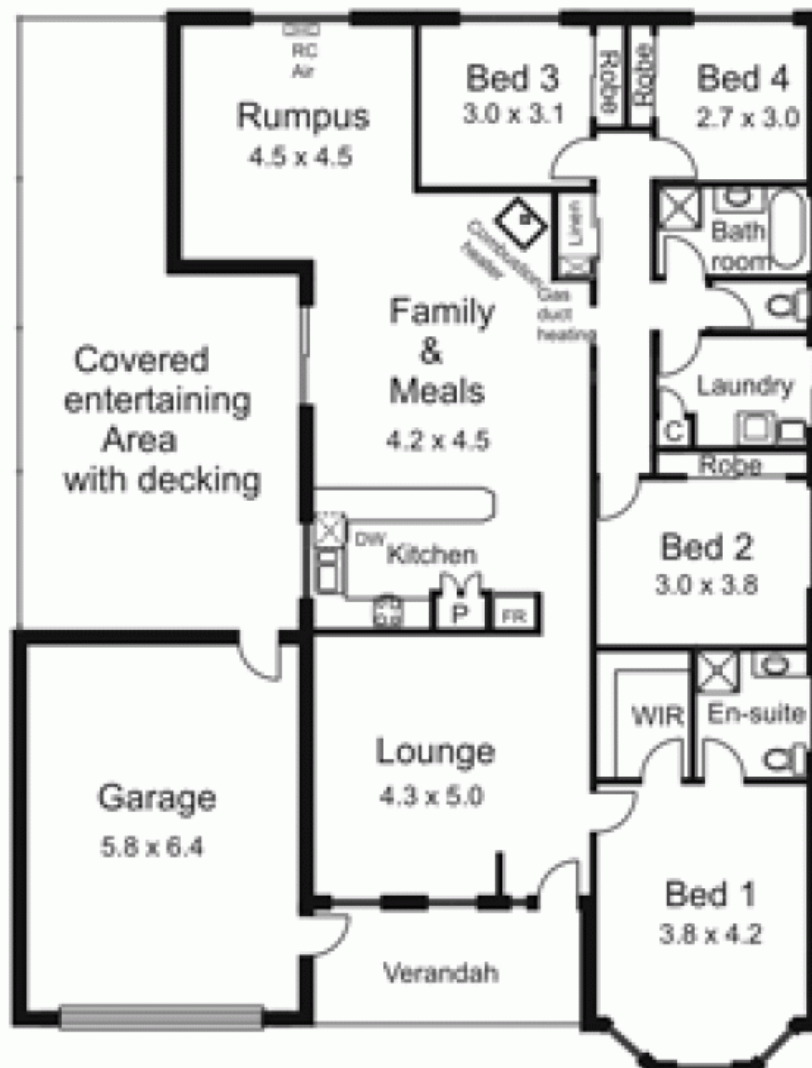
Rain  
water  
tank

Garden  
Shed  
3.0 x 3.0

Workshop/Garage  
5.9 x 9.0

Outbuildings not in actual position or orientation to house.

Cubby  
House  
2.4 x 2.6



All measurements are approximate only.  
Not drawn to scale.