

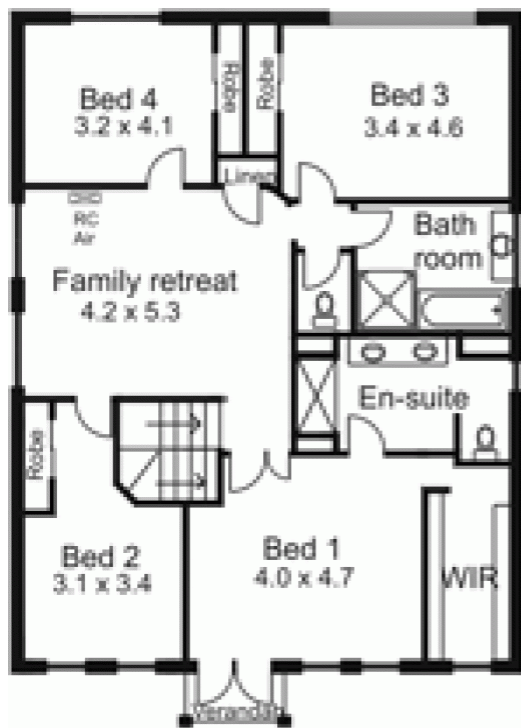


20 Coleman Court NEW GISBORNE VIC

4 3 2

Enjoy the space offered in this young home. Private sitting area, 3 very generous living areas downstairs plus retreat upstairs. 4 large bedrooms (main with ensuite, walk-in robe & balcony), & study. 3 bathrooms, attractive, well equipped kitchen & integrated al fresco area. Double garage, large garden shed & extensive landscaping. Abundant features incl. gas central heating, gas feature fire, 2 reverse cycle split systems, high quality soft furnishings, gas/solar hot water system, water tanks & much more. New neighbourhood with easy access to train station, schools, local facilities & quick link to freeway. A delightful property.

Building Size : 32 sqm
Land Size : 890 sqm
View : <https://www.kennedyandhunt.com.au/sale/vic/macedon-ranges/new-gisborne/residential/house/5848452>



UPPER LEVEL



GROUND FLOOR