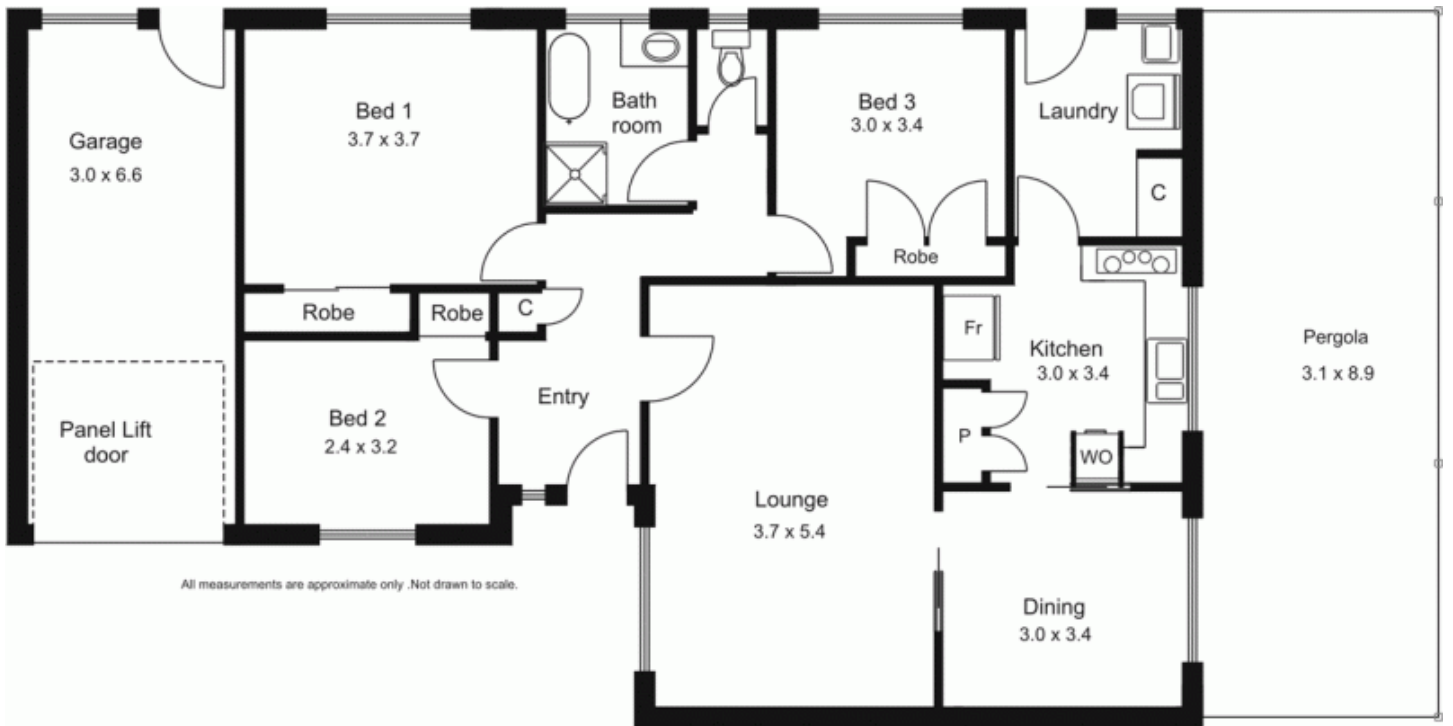


1/102 Station Road GISBORNE VIC

3  **1**  **1** 

Beat the rental cycle and take this opportunity to enter the property market! Great level of accommodation includes three bedrooms, lounge, dining, kitchen and laundry. Single integrated garage. Evaporative cooler. Located within easy access to the freeway and central to Gisborne and New Gisborne. This could be Gisbornes most affordable home!

Type : Unit
Building Size : 13 sqm
View : <https://www.kennedyandhunt.com.au/sale/vic/macedon-ranges/gisborne/residential/unit/5848456>



All measurements are approximate only. Not drawn to scale.