

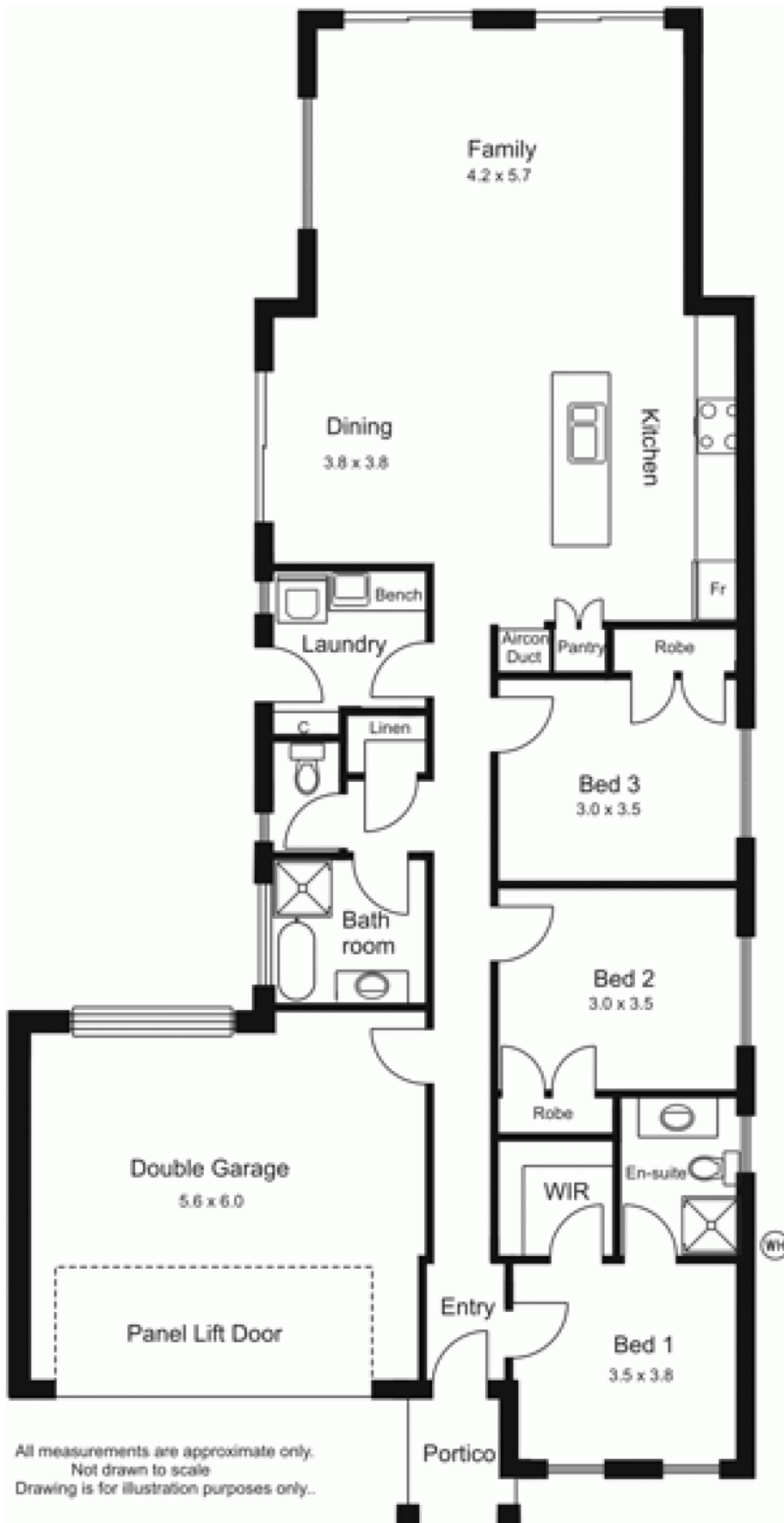


**5 Francis Crescent GISBORNE VIC**

3 2 2

No waiting to build, this complete, new home is ready and waiting for you to move in. Accommodation comprises three bedrooms, bathroom, ensuite and large kitchen/meals/family area. Integrated double garage with rear roller door. Includes large stainless steel stove with five burner cook top, glass splashbacks, solar/gas hot water service, ducted vacuum system, fan/lights in bathrooms, remote controlled garage door, alarm system and concrete driveway. Land fenced on three sides. Will appeal to retirees or perfect for first home buyers.

**Building Size** : 16 sqm  
**Land Size** : 939 sqm  
**View** : <https://www.kennedyandhunt.com.au/sale/vic/macedon-ranges/gisborne/residential/house/5848460>



All measurements are approximate only.  
 Not drawn to scale  
 Drawing is for illustration purposes only.