

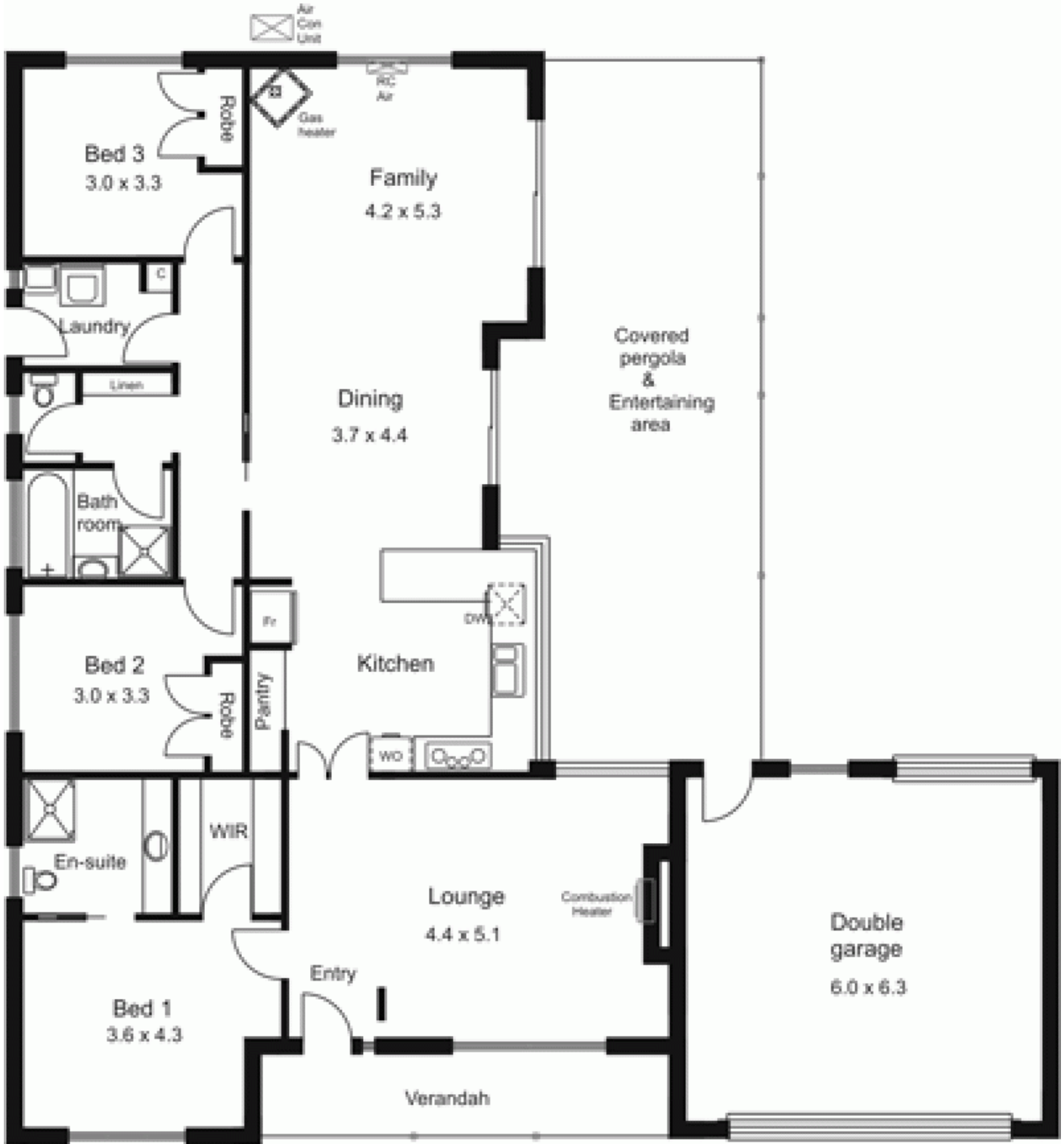


5 Comic Court NEW GISBORNE VIC

3 2 2

Set in established gardens. Great 3 bedroom floor plan with ensuite, formal lounge and kitchen/meals opening to large family room. Features polished timber floors, 2.6m ceilings, air conditioning, gas & wood heating, pergola and double garage. Large side garden. Move in and enjoy from day one!

Type : House
Price : \$ 368,000
Building Size : 19 sqm
Land Size : 852 sqm
View : <https://www.kennedyandhunt.com.au/sale/vic/macedon-ranges/new-gisborne/residential/house/5848461>



All measurements are approximate only .Not drawn to scale.
 Drawing is for illustration purposes only.