




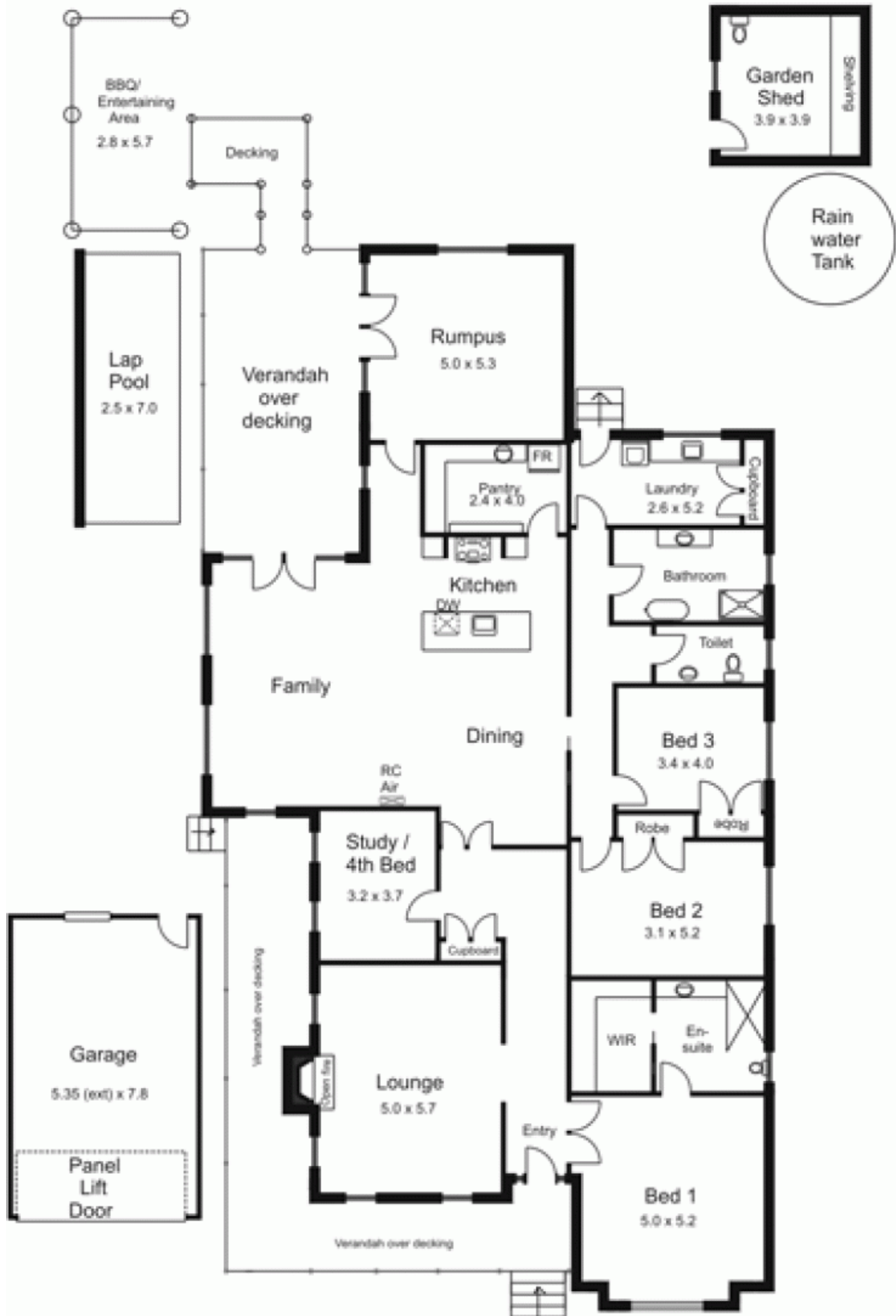


4 Doriemus Court GISBORNE VIC

4  2  2 

**Building Size** : 32 sqm  
**Land Size** : 1000 sqm  
**View** : <https://www.kennedyandhunt.com.au/sale/vic/macedon-ranges/gisborne/residential/house/5848464>

Outbuilding not in actual position or orientation to house.



All measurements are approximate only. Not drawn to scale.