

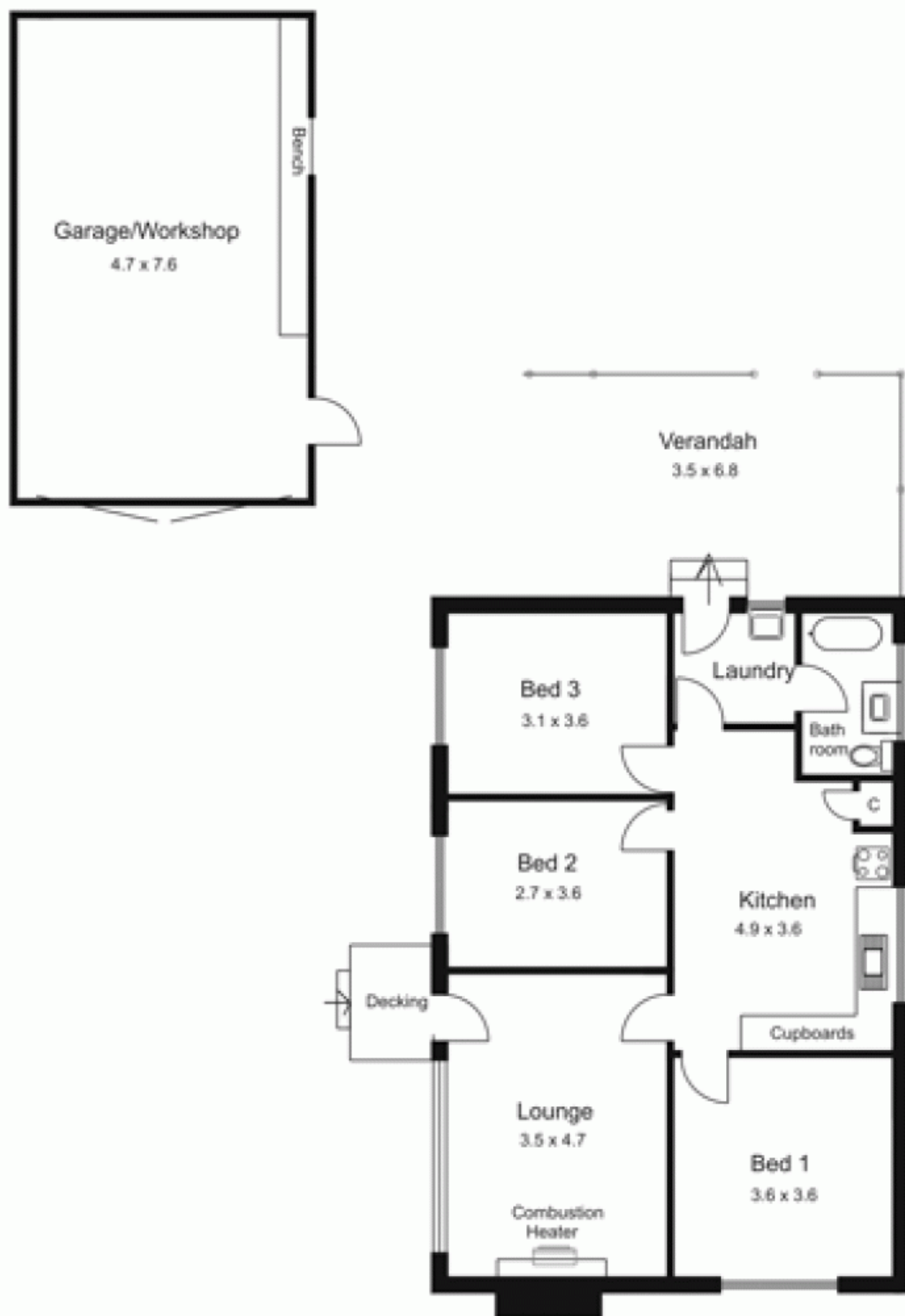


18 Farrell Street NEW GISBORNE VIC

3 1 2

Convenient to railway station, school and Calder Freeway. Timber residence offers 3 bedrooms, lounge & kitchen/meals area. Slow combustion heater. Double garage and concrete driveway. Compact home requires some TLC. Natural gas available

Building Size : 13 sqm
Land Size : 800 sqm
View : <https://www.kennedyandhunt.com.au/sale/vic/macedon-ranges/new-gisborne/residential/house/5848472>



Drawing is for illustration purposes only.
All measurements are approximate only.
Not drawn to scale.