

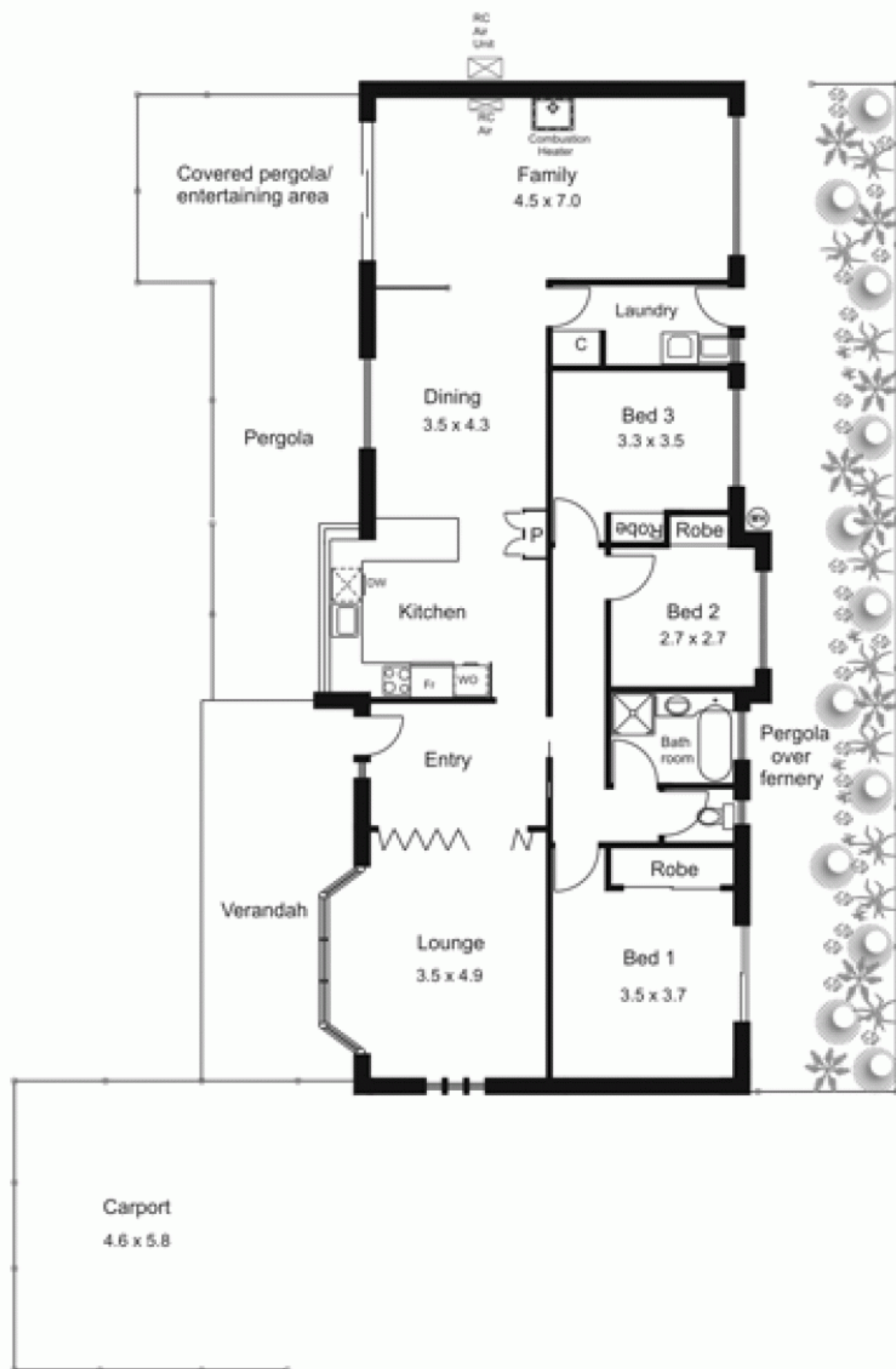


18 Mountain View Way GISBORNE VIC

3 1 2

Very neat and ready to enjoy. Featuring large family room opening onto pergola and secure spacious rear garden. Located in quite cul-de-sac. Comprises 3 bedrooms and 2 living areas. Cedar timberwork, rev. cycle air conditioner and cosy wood heater. Inspect today you'll love it!

Building Size : 16 sqm
Land Size : 657 sqm
View : <https://www.kennedyandhunt.com.au/sale/vic/macedon-ranges/gisborne/residential/house/5848475>



Drawing is for illustration purposes only.
All measurements are approximate only. Not drawn to scale.