

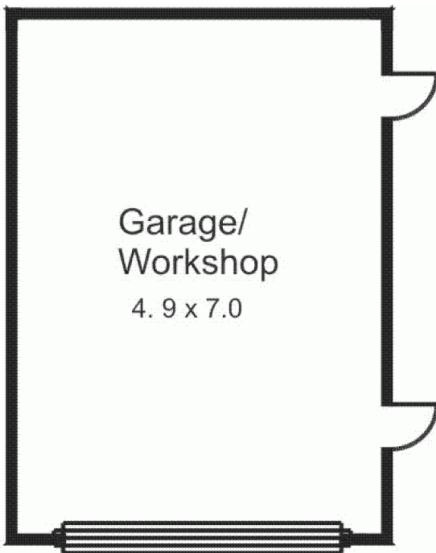


16 Pleasant View Court GISBORNE VIC

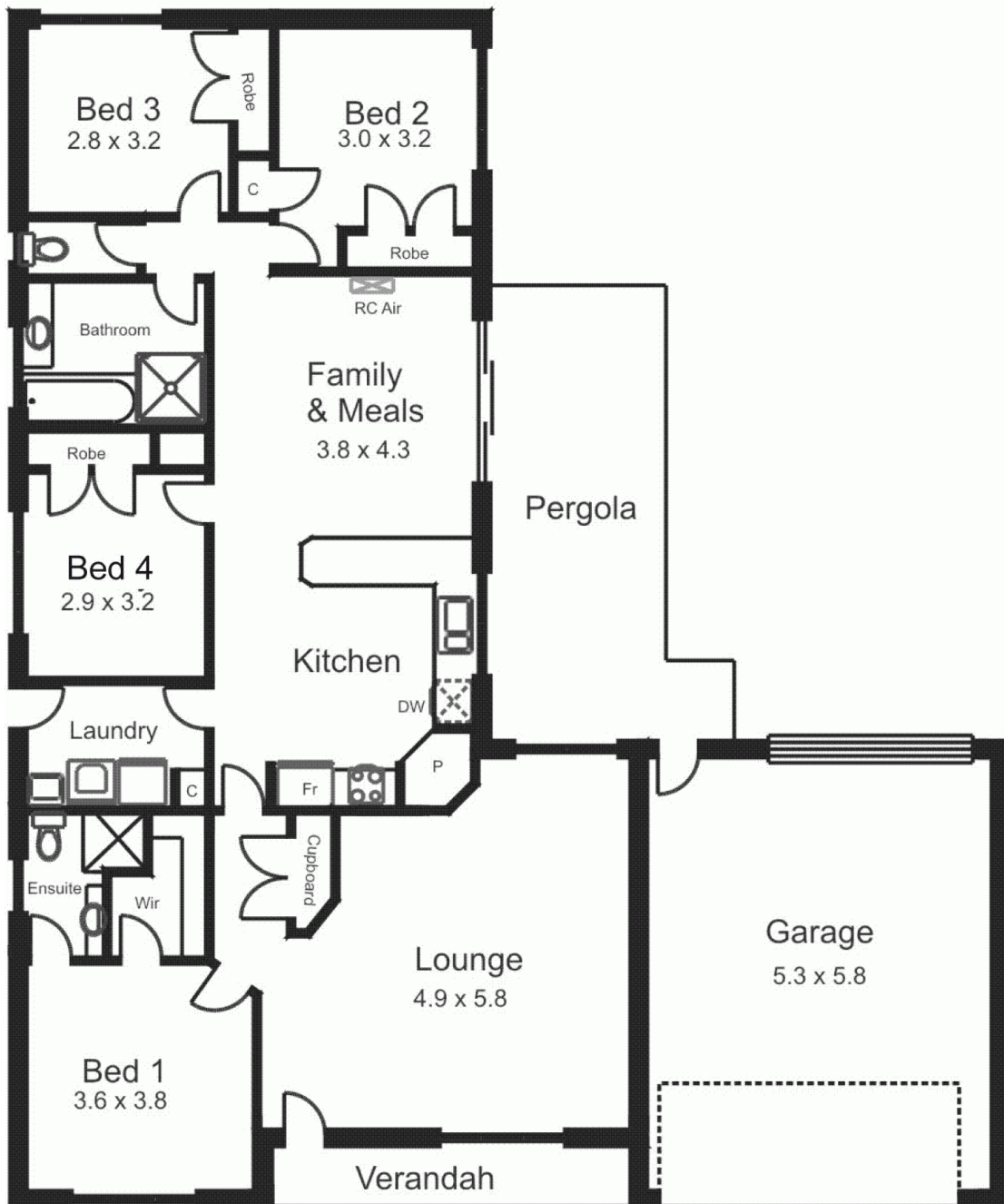
4 2 2

Enjoy the floor plan of this young home offering four bedrooms, formal lounge, kitchen/meals area, ensuite and main bathroom. Fittings include natural gas central heating, split system heating/cooling, sunblinds, electronic pergola roofing and good quality soft furnishings. Integrated double garage, under cover outdoor area and separate colorbond workshop and storage shed. Easy care, low maintenance garden.

Building Size : 16 sqm
Land Size : 664 sqm
View : <https://www.kennedyandhunt.com.au/sale/vic/macedon-ranges/gisborne/residential/house/5848481>



Outbuilding not in actual position to house



All measurements are approximate only. Not drawn to scale.