

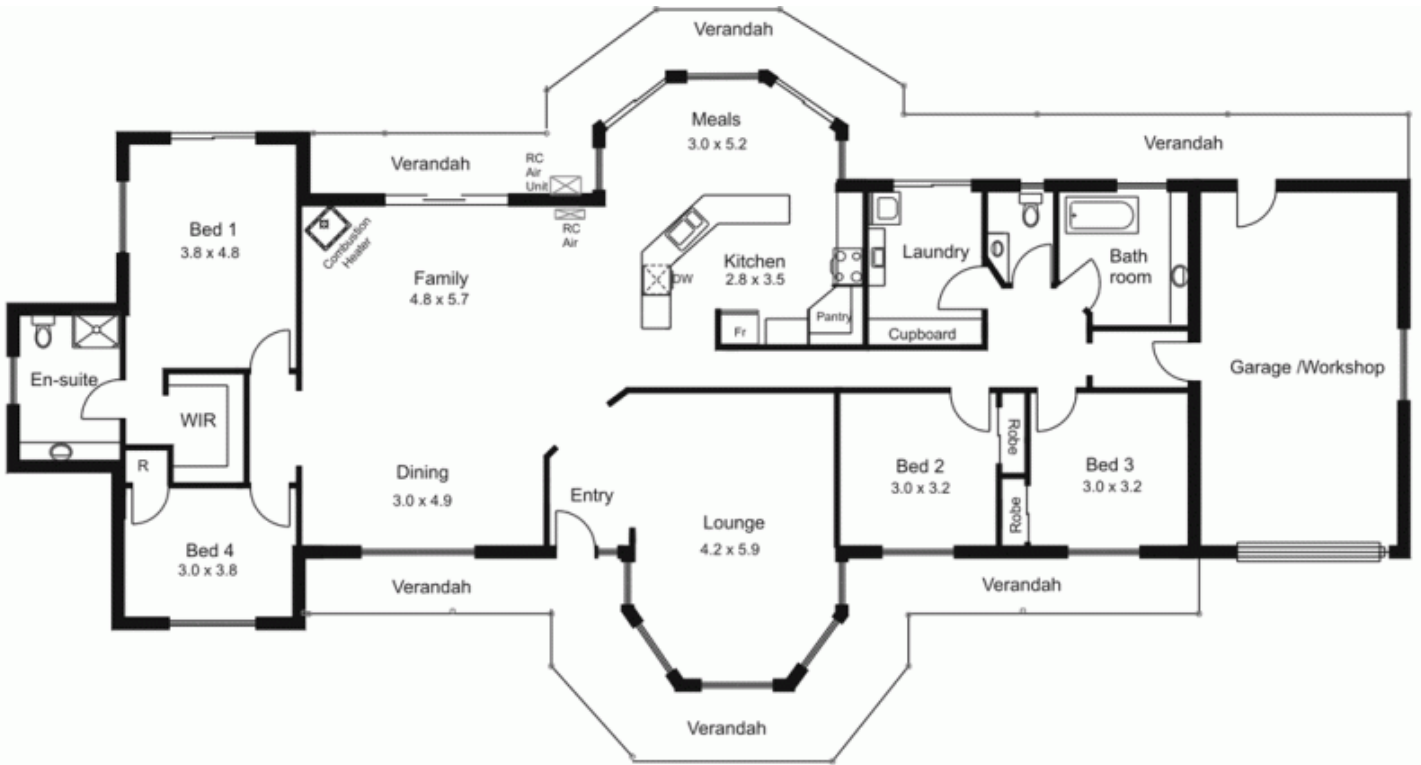


119 Sheedy Road GISBORNE VIC

4 2 1

Presentation at its best. Four bedroom home offers large open living areas, formal sitting room and front entry hall. Features include selection of craftsman timberwork, granite bench tops, quality appliances, vacuum system, slow combustion heater, reverse cycle air conditioner, lined verandahs and integrated garage. Private and relaxed garden setting easy walk to town facilities.

Type : House
Building Size : 25 sqm
Land Size : 6347 sqm
View : <https://www.kennedyandhunt.com.au/sale/vic/macedon-ranges/gisborne/residential/house/5848484>



Drawing is for illustration purposes only. All measurements are approximate only. Not drawn to scale.