

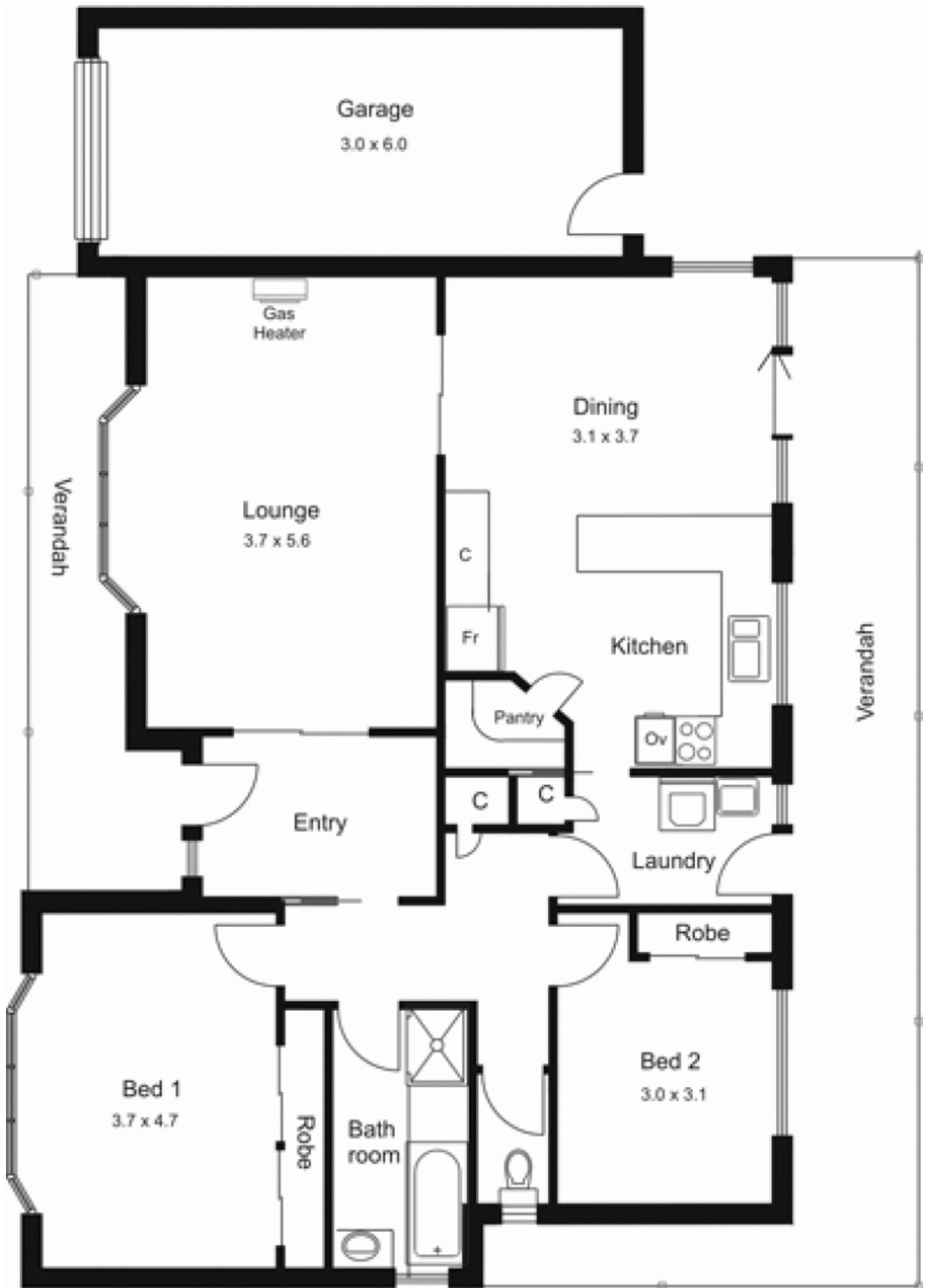


1 Station Road NEW GISBORNE VIC

2 1 1

Private garden setting and easy walking distance to railway station, shop & tavern. Both residences includes 2 bedrooms, formal entry hall, spacious lounge, dining area with direct access to verandah and garden. Bay windows, high ceilings, recently re-carpeted and painted, new blinds. Garage and extensive paving. Outstanding owner occupier or investment opportunity. Currently let with attractive rental return.

Type : Townhouse
Building Size : 11 sqm
View : <https://www.kennedyandhunt.com.au/sale/vic/macedon-ranges/new-gisborne/residential/townhouse/5848488>



All measurements are approximate only. Not drawn to scale.