

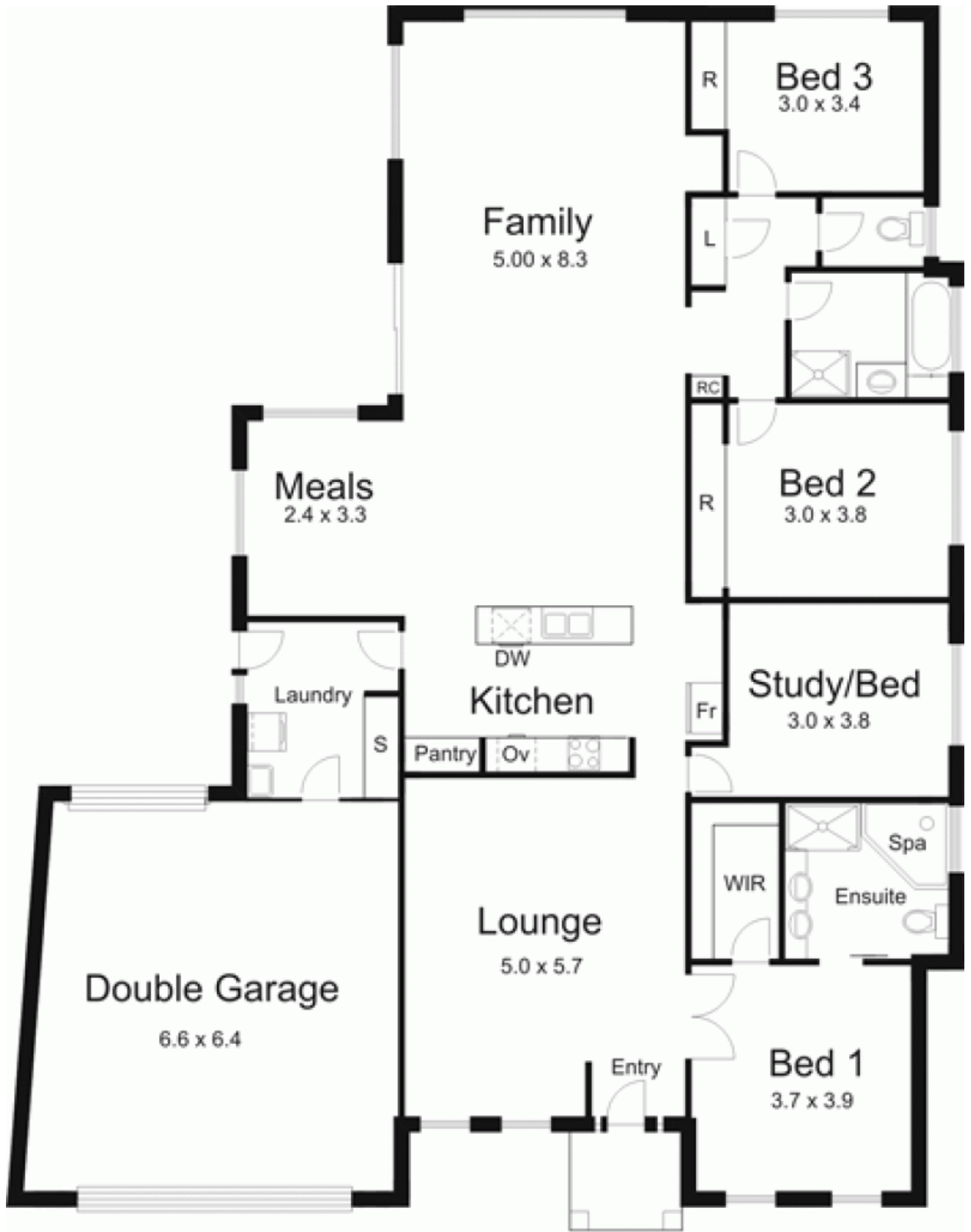


**21 Pleasant View Court GISBORNE VIC**

4 2 1

Great floor plan for the growing family or those who just want to spread out! The home offers three bedrooms and study (or fourth bedroom), lounge, huge kitchen/meals/family room, bathroom and ensuite (with spa bath). Integrated garage with rear roller door. Neutral colour scheme and contemporary finishes. Secure rear garden.

**Type** : House  
**Building Size** : 18 sqm  
**Land Size** : 669 sqm  
**View** : <https://www.kennedyandhunt.com.au/sale/vic/macedon-ranges/gisborne/residential/house/5848492>



All measurements are approximate only