

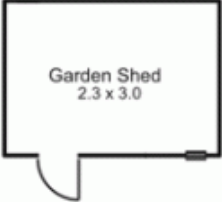


1/261 Station Road NEW GISBORNE VIC

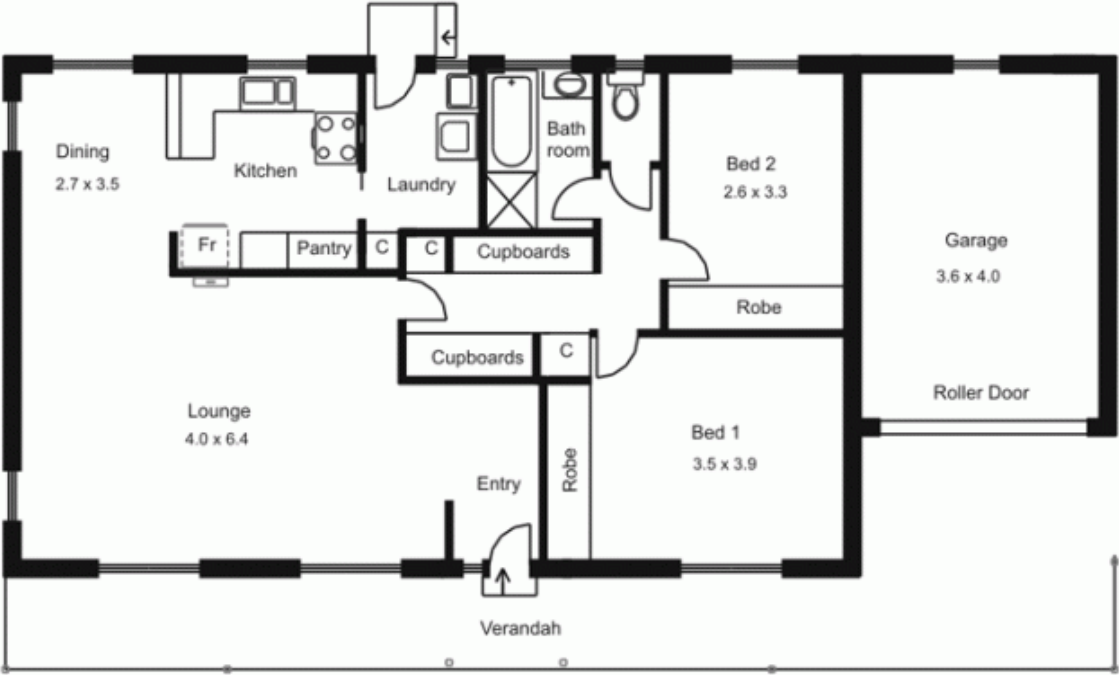
2 1 2

One of only two units taking the front position on approximately a quarter of an acre. The residence comprises two bedrooms, entryway, spacious lounge/dining area, bathroom and separate laundry. Single car garage and wide practical veranda to the front of the home. Walking distance to station, shop, tavern and schools. If you are looking for a unit with a little more external space then you have found it!

Type : Unit
Building Size : 11 sqm
View : <https://www.kennedyandhunt.com.au/sale/vic/macedon-ranges/new-gisborne/residential/unit/5848504>



Outbuilding not in actual position to house.



Drawing is for illustration purposes only. Not drawn to scale. All measurements are approximate only.