

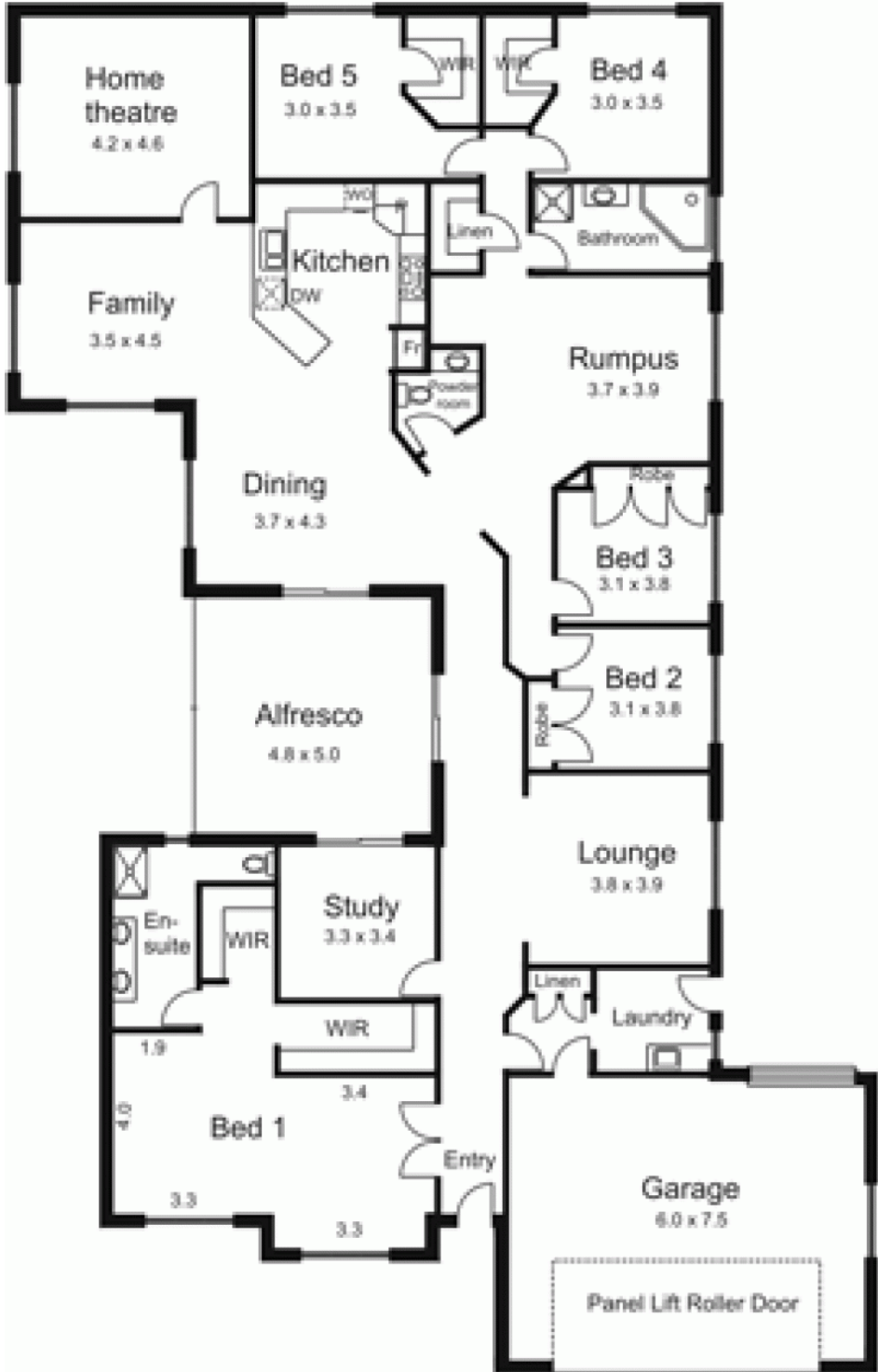


11 Pindara Place GISBORNE VIC

5 2 2

Rarely do residences of this calibre enter the marketplace! With enough space to house the biggest family this home comprises five bedrooms plus study, formal lounge, kids rumpus room, north facing kitchen/meals/living, separate home theatre room and alfresco living area. End of court location. Double integrated garage. Excellent water storage and pump. If you are looking for a large home with the best view in town this is definitely the one!!

Type : House
Building Size : 33 sqm
Land Size : 1447 sqm
View : <https://www.kennedyandhunt.com.au/sale/vic/macedon-ranges/gisborne/residential/house/5848517>



Drawing is for illustration purposes only. All measurements are approximate only. Not drawn to scale.