



41 Cherry Lane GISBORNE VIC

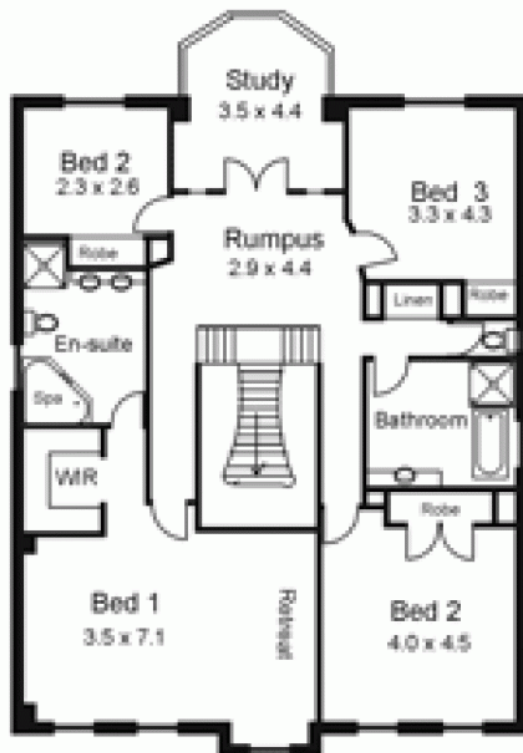
5 2 2

As new spacious family home offering 5 large bedrooms, study, impressive stair case, 2 ensuites, family bathroom and powder room, 3 living areas and prestigious front entry hall. Natural gas central heating and gas log fire, timber flooring. Integrated double garage, garden shed and rain water tank. Established gardens, corner location.

Type : House
Building Size : 39 sqm
Land Size : 212 sqm
View : <https://www.kennedyandhunt.com.au/sale/vic/macedon-ranges/gisborne/residential/house/5848520>



Ground Floor



Upper Level