


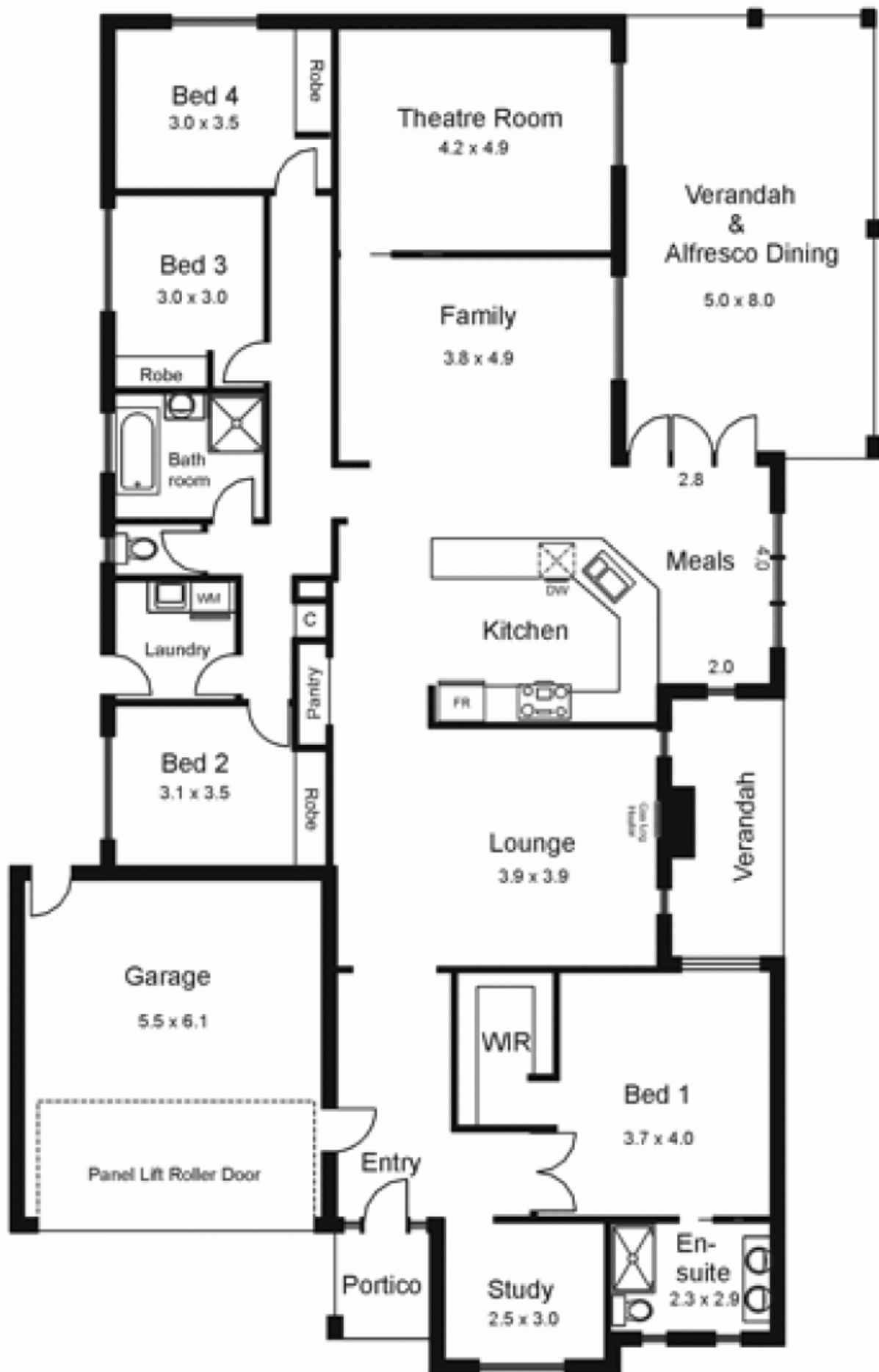




11 Francis Crescent GISBORNE VIC

4  2  2 

**Type** : House  
**Building Size** : 24 sqm  
**Land Size** : 855 sqm  
**View** : <https://www.kennedyandhunt.com.au/sale/vic/macedon-ranges/gisborne/residential/house/5848524>



Drawing is for illustration purposes only. Not drawn to scale.  
 ALL MEASUREMENTS ARE APPROXIMATE ONLY.