

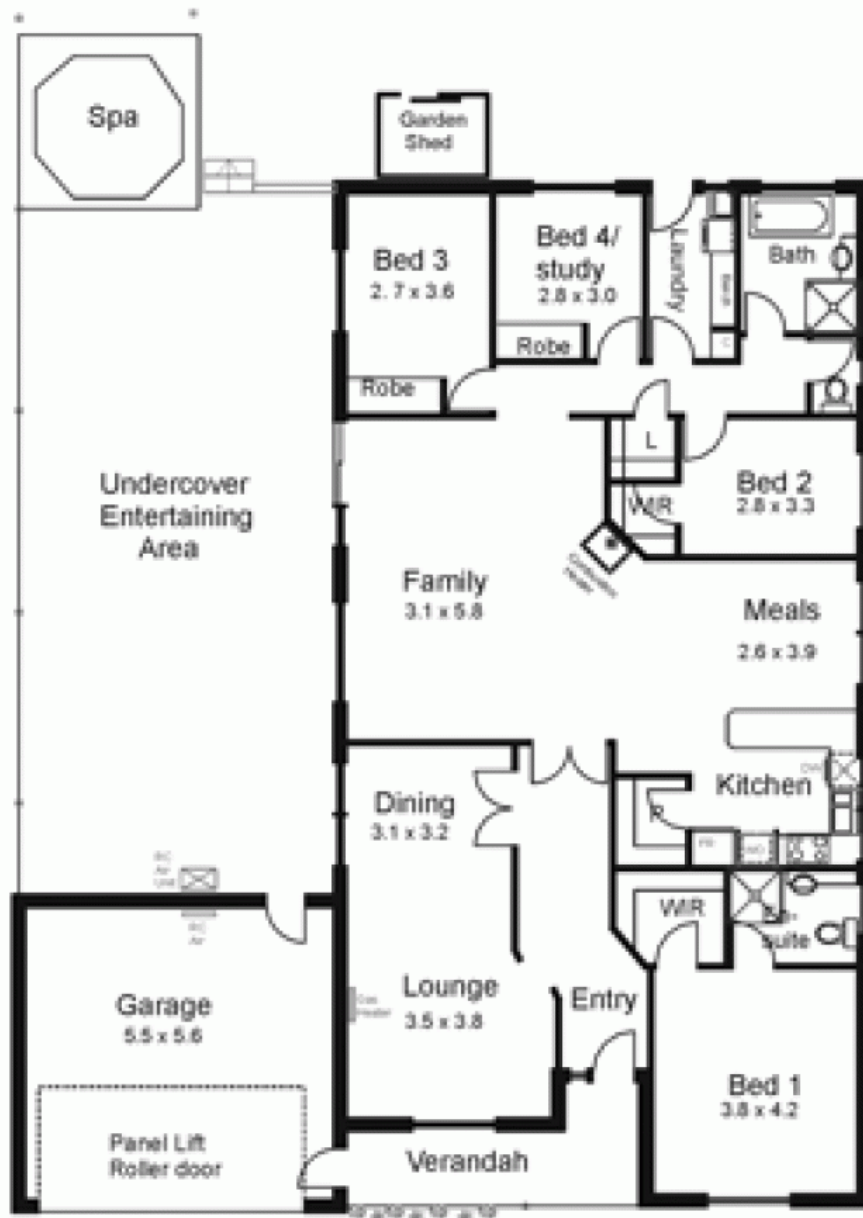
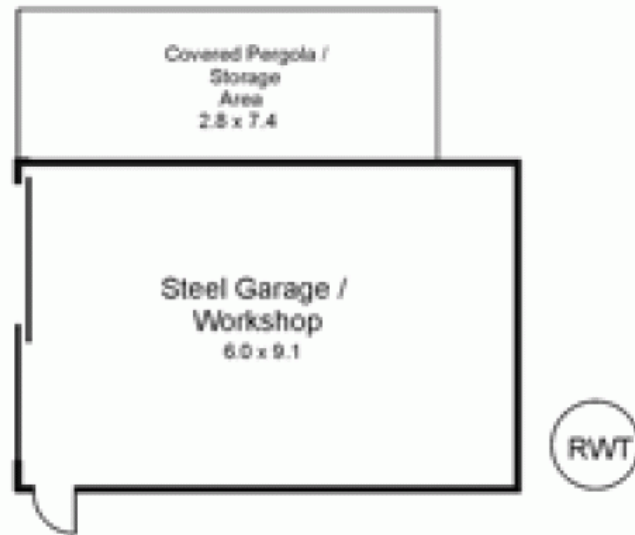


**46 Dalray Crescent NEW GISBORNE VIC**

4 2 2

Just move in and enjoy the convenience of a real family home within walking distance to schools, train station and parks. Accommodation offers three bedrooms plus study/fourth bedroom, separate lounge/dining room, large, open plan kitchen/meals/living area, ensuite and main bathroom. Features include evap.cooling, natural gas central heating and quality soft furnishings. Integrated double garage, huge undercover outdoor entertaining area with spa, childrens play area, separate double steel garage with concrete floor and power ensure there is a space for everyone to enjoy!

**Type** : House  
**Building Size** : 21 sqm  
**Land Size** : 1500 sqm  
**View** : <https://www.kennedyandhunt.com.au/sale/vic/macedon-ranges/new-gisborne/residential/house/5848525>



Drawing is for illustration purposes only. Not drawn to scale.  
All measurements are approximate only.