

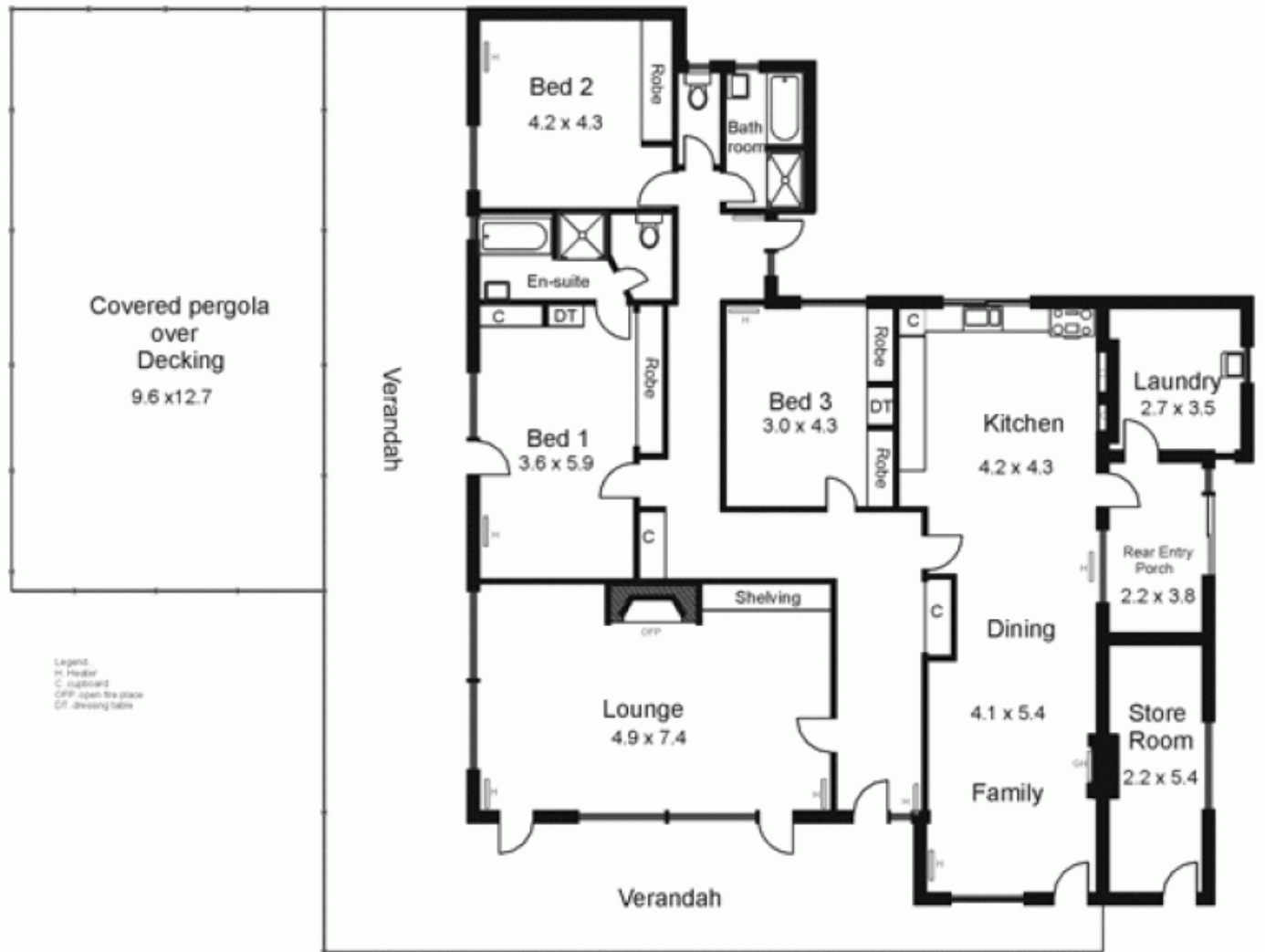


218 Lawson Road MACEDON VIC

3 2 2

Located in a peaceful garden setting with lily ponds and wide variety of trees. 3 bedroom timber residence, 2 bathrooms, 2 living areas, hydronic heating and large under cover outdoor living area. Outbuildings comprise stables, shearing shed, machinery shed, hay shed, storage shedding, stock yards & shelter, 12 paddocks. Water supply bore, dams & rain water tanks. Superb views to Macedon Ranges. Five minutes to Macedon & Gisborne townships.

Type : Acreage/Semi-Rural
Building Size : 24 sqm
View : <https://www.kennedyandhunt.com.au/sale/vic/macedon-ranges/macedon/residential/acreagesemirural/5848530>



Drawing is for illustration purposes only. Not drawn to scale. All measurements are approximate only.