

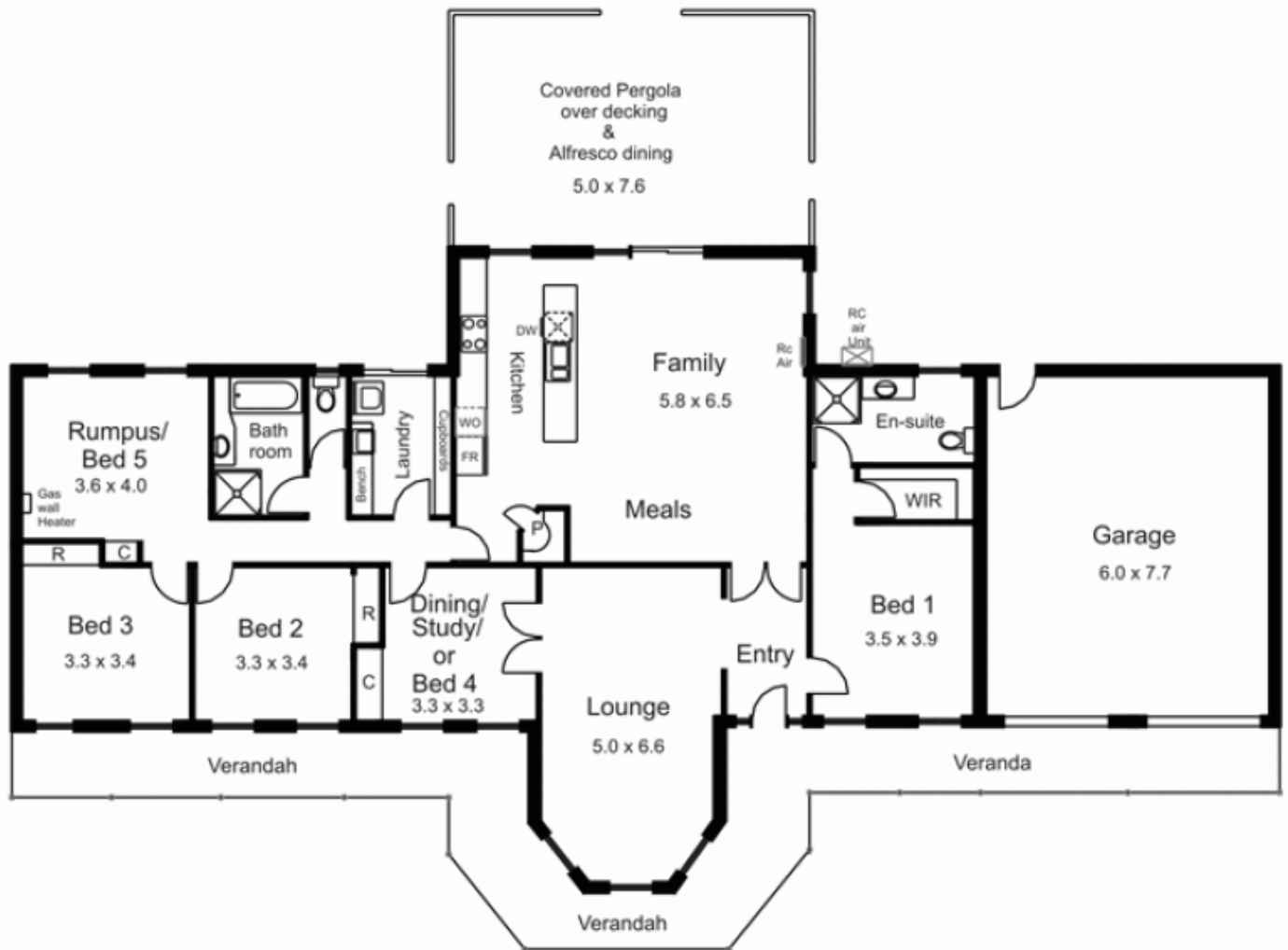


**46 Chessy Park Drive NEW GISBORNE VIC**

4 🏠 2 🚗 2 🚗

Versatile floor plan adaptable up to 5 bedrooms if required or enjoy formal dining and a 3rd living area. Includes spacious ensuite, open plan family room opening to large pergola with timber decking, formal lounge and well appointed kitchen. Double garage. Easy walk to station and primary schools. Ready to enjoy!

**Type** : House  
**Building Size** : 23 sqm  
**View** : <https://www.kennedyandhunt.com.au/sale/vic/macedon-ranges/new-gisborne/residential/house/5848544>



Drawing is for illustration purposes only. Not drawn to scale. All measurements are approximate only.