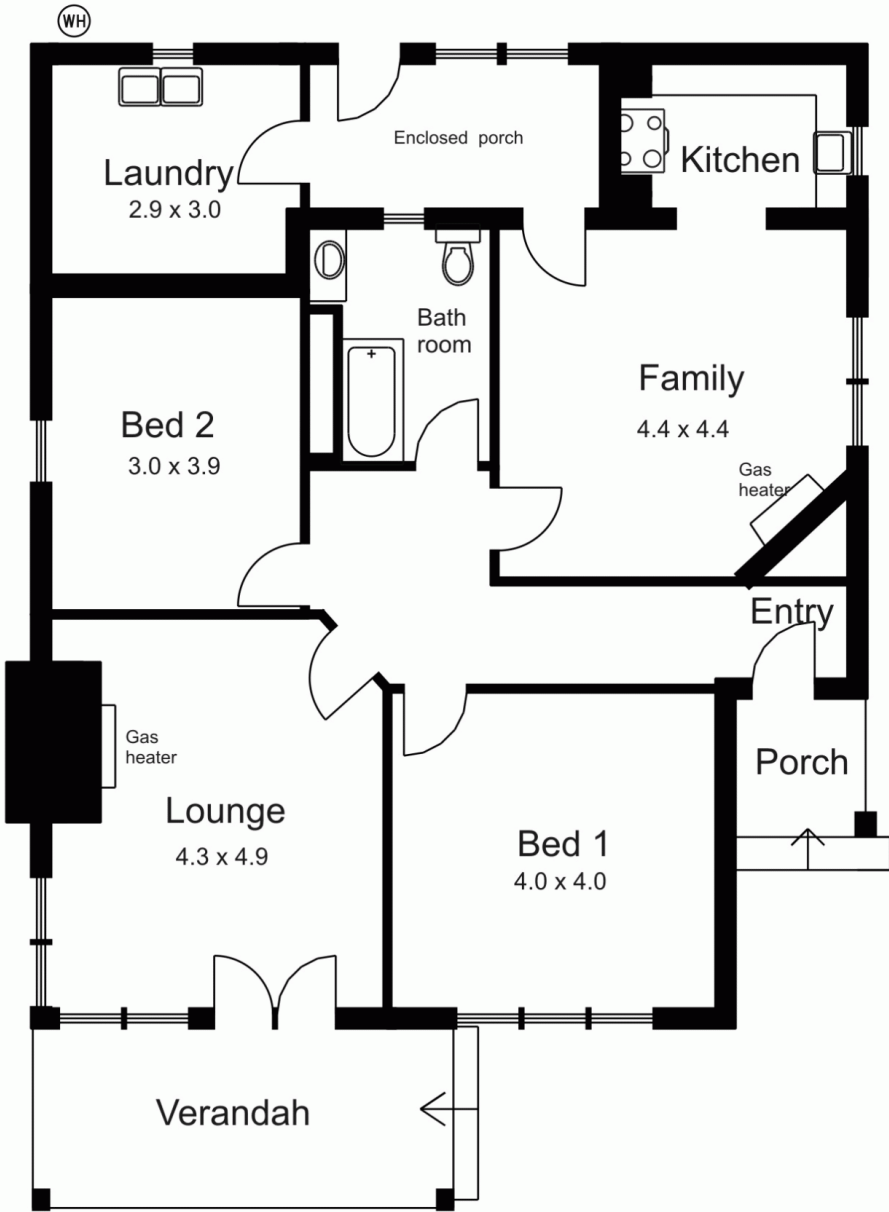
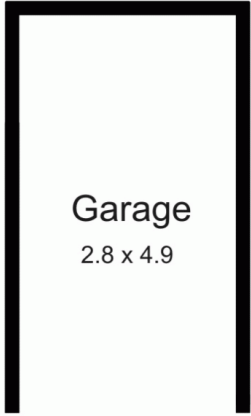


52 Goode Street GISBORNE VIC

2 1 1

High position in popular leafy location only a short walk to town centre. Excellent opportunity to further develop as character residence or town house site (S.T.C.A.) Comprises 4 main rooms, fireplaces and high feature ceilings. Long term established gardens. Inspect this lucrative opportunity.

Type : House
Building Size : 15 sqm
Land Size : 1163 sqm
View : <https://www.kennedyandhunt.com.au/sale/vic/macedon-ranges/gisborne/residential/house/5848545>



Drawing is for illustration purposes only. Not drawn to scale. All measurements are approximate only.