

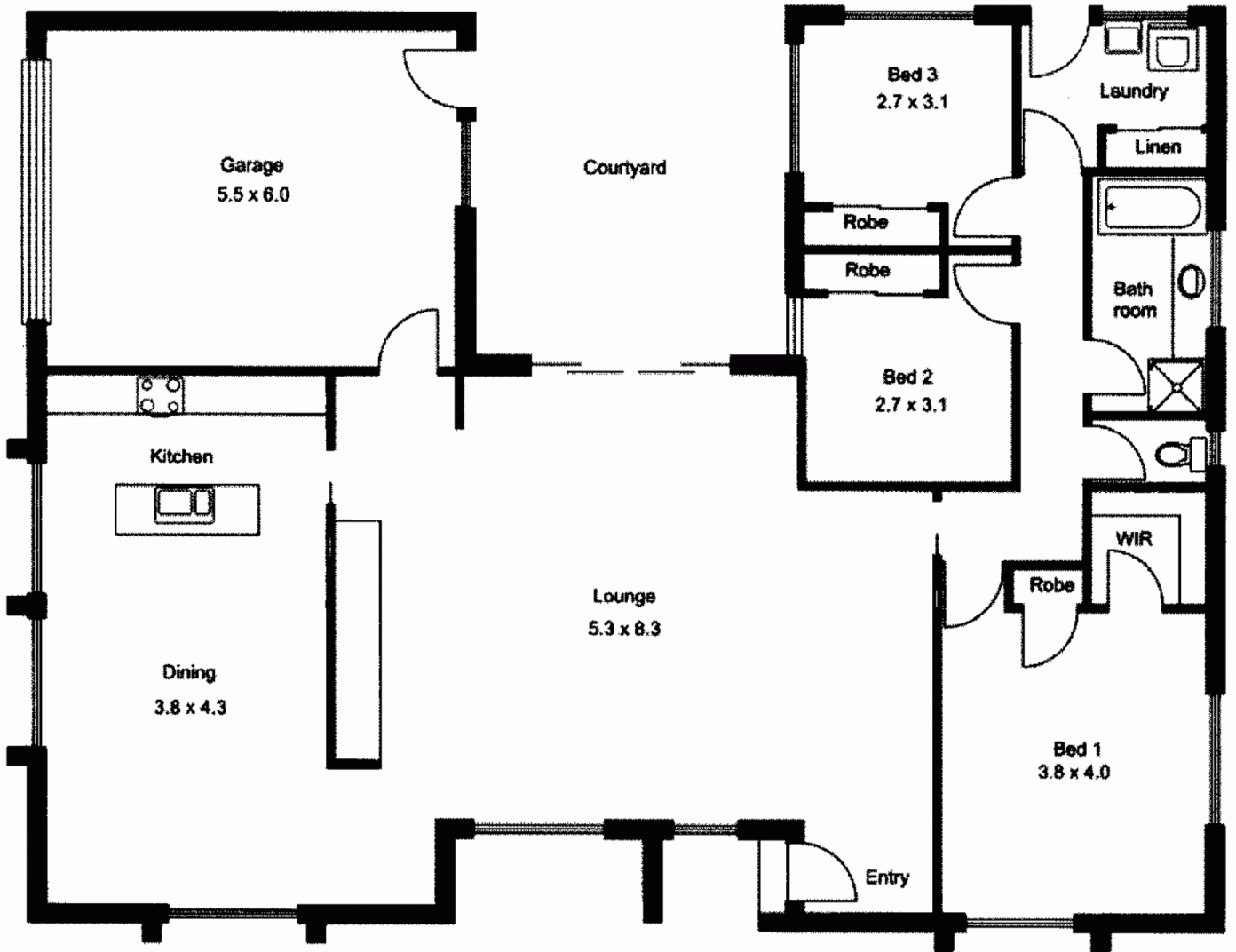


2 Hilltop Way GISBORNE VIC

3 1 2

Light and bright with a floor plan allowing lots of winter sunshine into the two spacious living areas. Three bedrooms and family bathroom. Integrated double garage and rear courtyard. Electric appliances and split system heating/cooling. Simple living at its very best only minutes from township.

Type : House
Building Size : 17 sqm
Land Size : 691 sqm
View : <https://www.kennedyandhunt.com.au/sale/vic/macedon-ranges/gisborne/residential/house/5848567>



All measurements are approximate only. Not drawn to scale.