



**2 Galilee Court NEW GISBORNE VIC**

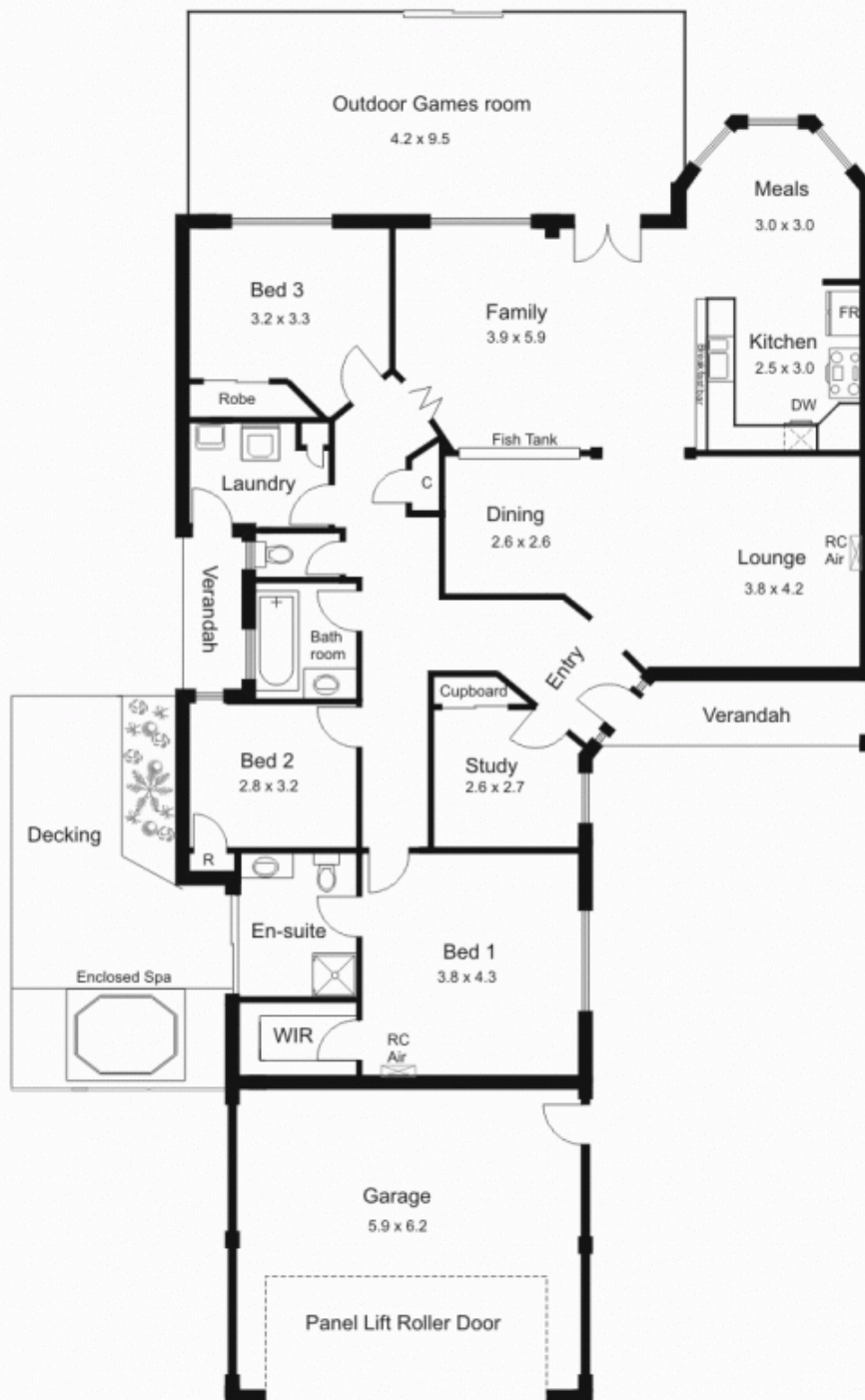
3 2 4

Inspect to appreciate all there is on offer! 3 bedrooms and study, 2 living areas, modern kitchen, ensuite and bathroom. Fittings include gas and electric cooking, dishwasher, 2 split system heating/cooling units, large display aquarium, aluminium shutters and more. Undercover outdoor area, gazebo, cubby house, outdoor spa and double garage. Everything to entertain the whole family and close to schools, train station and parks.

**Type** : House  
**Building Size** : 18 sqm  
**Land Size** : 850 sqm  
**View** : <https://www.kennedyandhunt.com.au/sale/vic/macedon-ranges/new-gisborne/residential/house/5848568>



Outbuildings not in actual position to house



Drawing is for illustration purposes only. Not drawn to scale. All measurements are approximate only.