

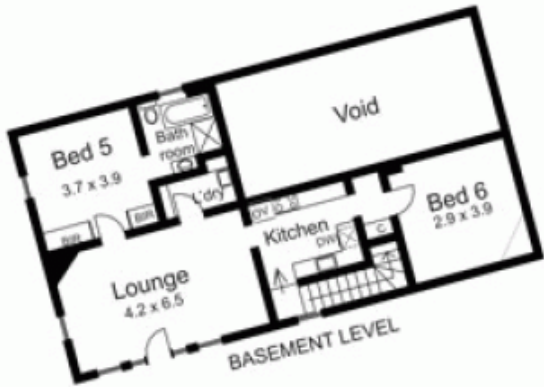


8 Charles Court GISBORNE VIC

4 2 2

Clever craftsmanship and masonry, period features and detail all combine to create a stately 4 bedroom + study home with spacious and gracious accommodation for the largest family. Separate fully self contained 2 bedroom apartment provides fabulous space for guests/extended family or even a B & B venture. The grounds offer tennis court, paved gazebo/barbeque courtyard, outdoor spa, extensive garaging/shedding, carport, mature gardens with stone edging and walls. Character and charm within easy distance to town and facilities.

Type : House
Building Size : 50 sqm
Land Size : 4000 sqm
View : <https://www.kennedyandhunt.com.au/sale/vic/macedon-ranges/gisborne/residential/house/5848570>



LEGEND.....

- BR... Built in robe
- BC... Built in cupboard
- DW... dishwasher
- CH... combustion heater
- OV... oven
- WO... Walk in robe
- WP... walk in pantry

Drawing is for illustration purposes only. Not drawn to scale. All measurements are approximate only.