

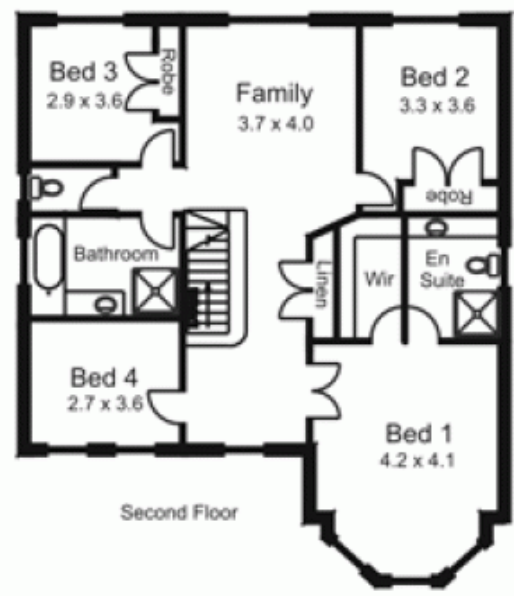
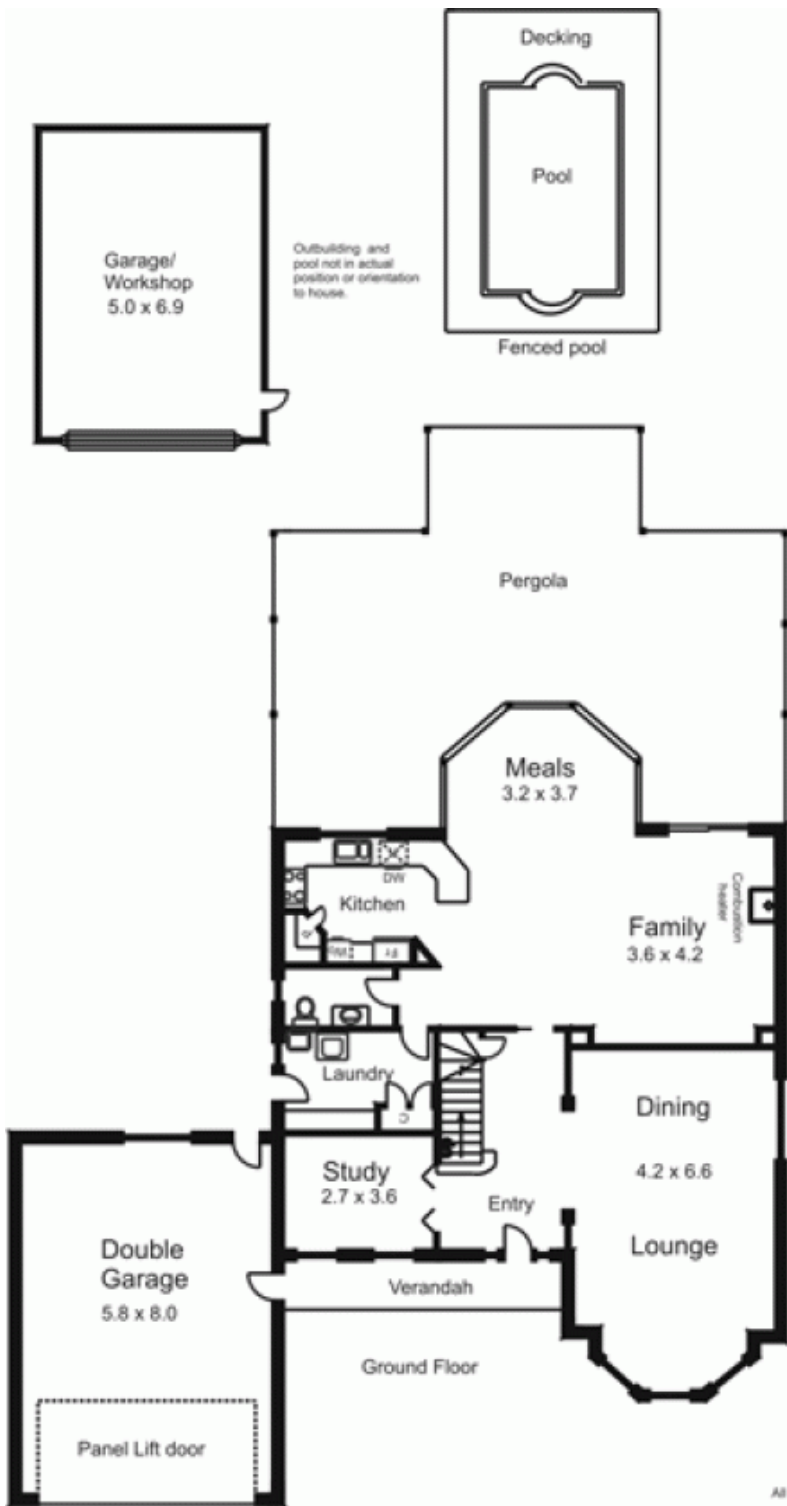


**19 Dalray Crescent NEW GISBORNE VIC**

4 🏠 2 🚗 2 🚗

Immaculately presented & absolutely complete inside & out. A dream home for the fun loving family that likes to entertain on a grand scale. Accommodation - 4 bedrooms, study, full ensuite, formal lounge/dining, kitchen/meals/family & upstairs studio/playroom. Features natural gas ducted heating, cooling, quality soft furnishings, polished floors & magnificent pergola overlooking sparkling pool & landscaped gardens. Integrated garage, sep. shed & reticulated tank watering system. Just move in and enjoy.

**Type** : House  
**Building Size** : 28 sqm  
**Land Size** : 1590 sqm  
**View** : <https://www.kennedyandhunt.com.au/sale/vic/macedon-ranges/new-gisborne/residential/house/5848580>



All measurements are approximate only.  
Not drawn to scale.