

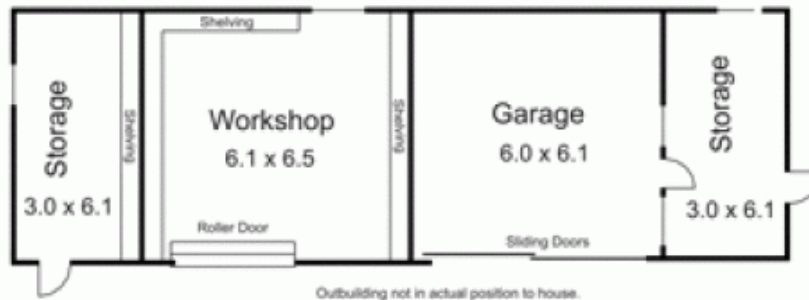


119 Millett Road GISBORNE SOUTH VIC

4 🏠 2 🚗 4 🚗

Fully renovated and presented to impress. Accommodation comprises four bedrooms kitchen/meals and two adjoining areas that include lounge, dining and entertaining space. Features include Ceaser stone bench tops, stainless steel appliances, fully ducted reverse cycle split system and much more. External highlights include elevated deck and pergola, bore, dam and large practical shedding. This excellent location allows seamless access to Sunbury and the Calder Freeway. Your rural lifestyle begins here!

Type : Acreage/Semi-Rural
Building Size : 20 sqm
Land Size : 40469 sqm
View : <https://www.kennedyandhunt.com.au/sale/vic/macedon-ranges/gisborne-south/residential/acreagesemirural/5848605>

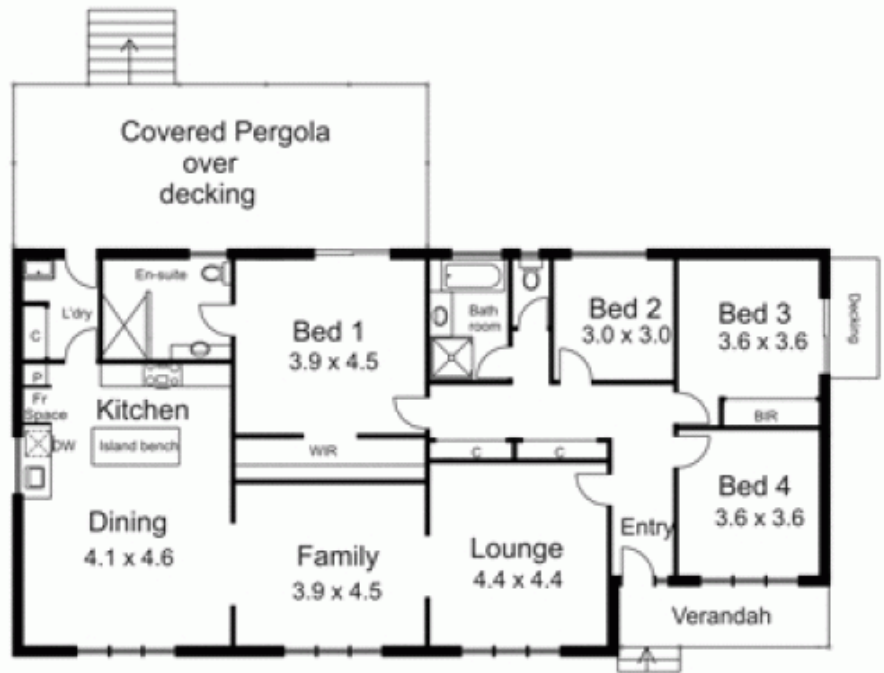


Outbuilding not in actual position to house.



Legend...
 BR... Built in Robe
 C... Cupboard
 DW... Dish washer
 Fr Space... Fridge space
 L'dry... Laundry
 WR... Walk in robe

Rain water tanks not in actual position to house



Drawing is for illustration purposes only. Not drawn to scale. All measurements are approximate only.