

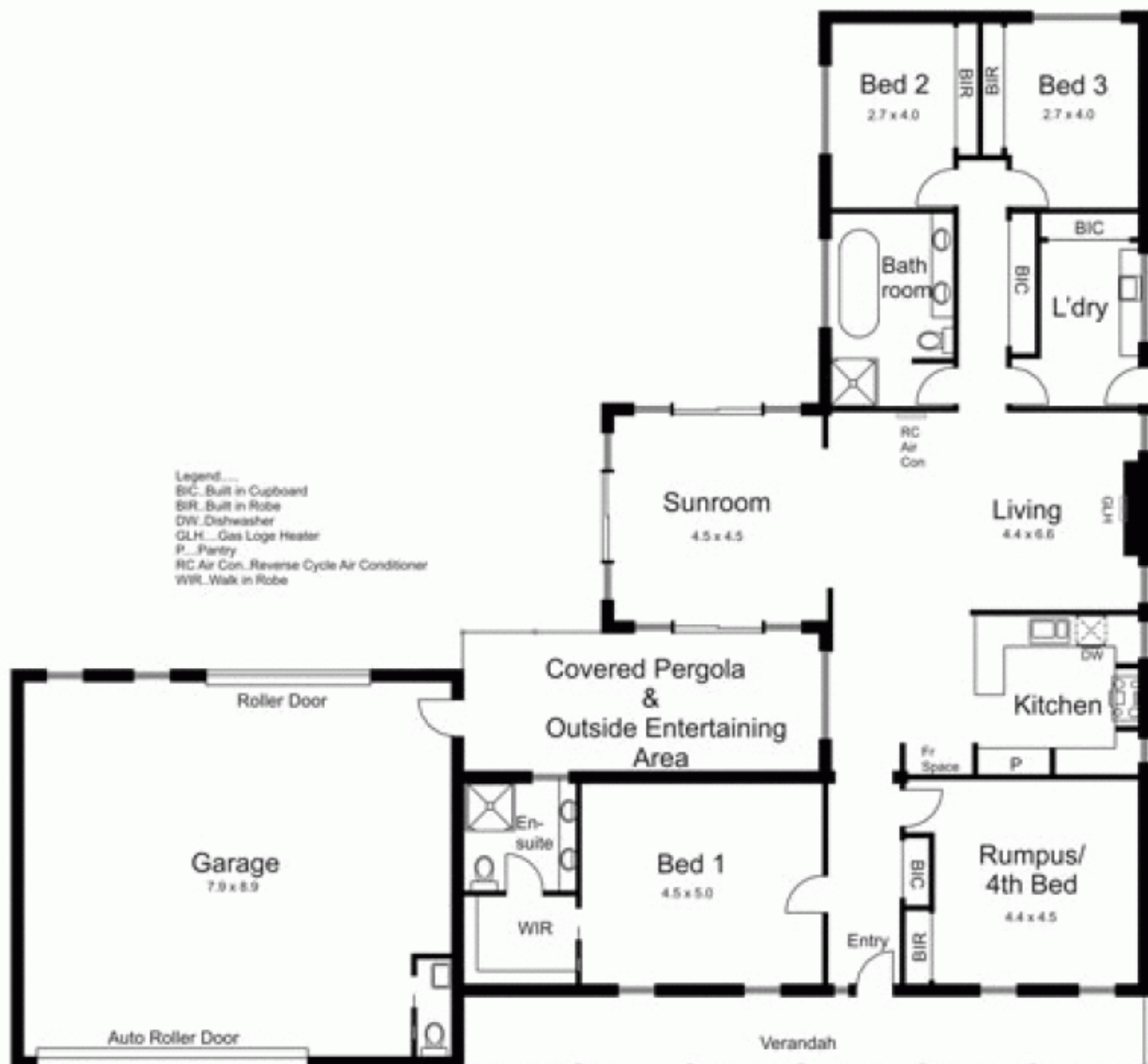


**5 Pontvale Close GISBORNE VIC**

3 2 5

Spread your wings on this wonderfully large allotment with plenty of space for shedding, gardens, pool or simply for the family to enjoy. Floorplan comprises three bedrooms, Ensuite, rumpus room or 4th bedroom. The central living space comprises kitchen, meals, living and sunroom. Loads of features include double glazing, stainless steel appliances, impressive triple garage with workshop and WC, water tank, undercover entertaining area. Excellent finish throughout the entire property. An outstanding place to call home!!

**Type** : House  
**Building Size** : 24 sqm  
**Land Size** : 1924 sqm  
**View** : <https://www.kennedyandhunt.com.au/sale/vic/macedon-ranges/gisborne/residential/house/5848624>



Legend...  
 BIC... Built in Cupboard  
 BIR... Built in Robe  
 DW... Dishwasher  
 GLH... Gas Loge Heater  
 P... Pantry  
 RC Air Con... Reverse Cycle Air Conditioner  
 WIR... Walk in Robe

Drawing is for illustration purposes only. Not drawn to scale. All measurements are approximate only.