

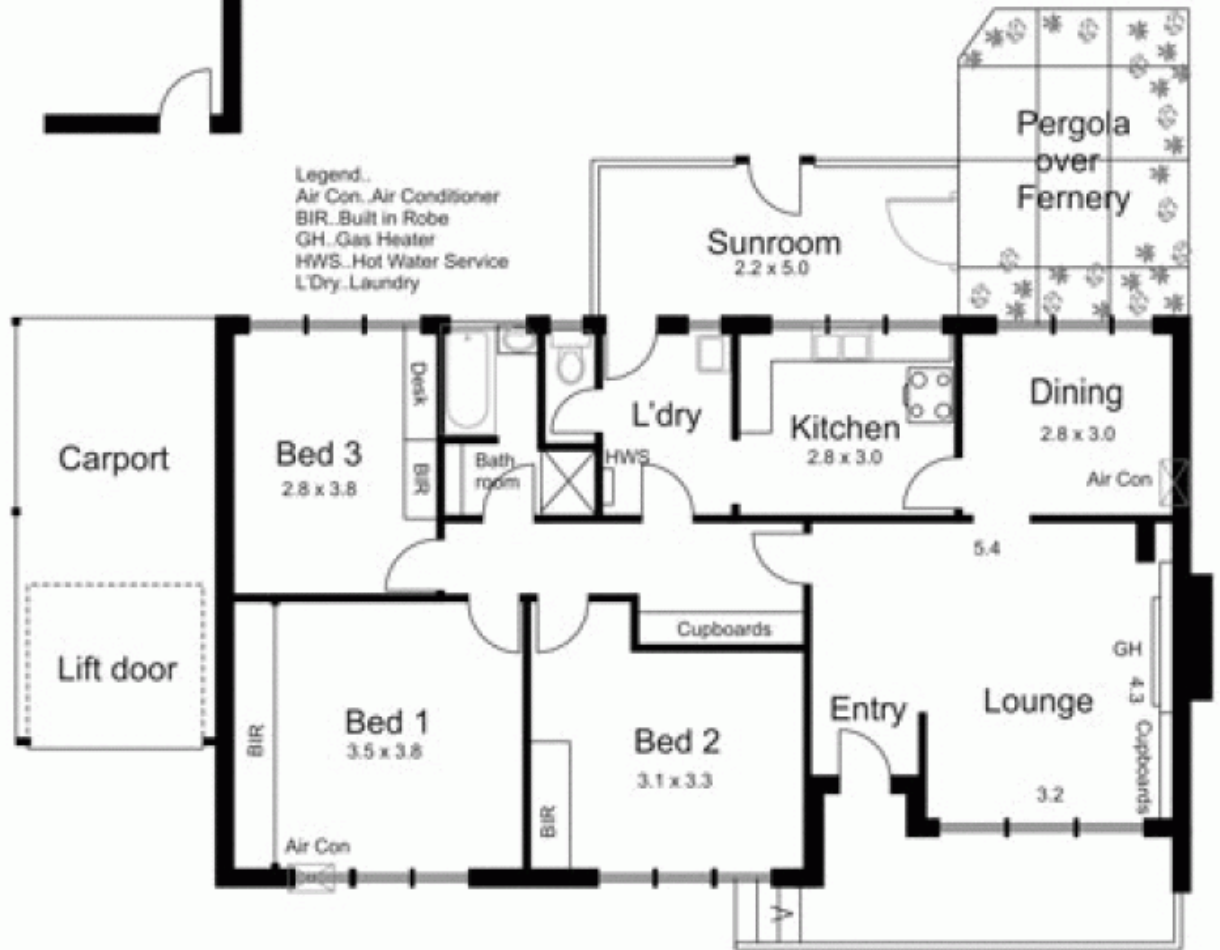


204 Station Road NEW GISBORNE VIC

3  1  1 

Adjacent to park land, close to tennis courts and fronting an avenue of oaks and elms. Three bedroom home, lounge, dining and separate front entry. Garage / workshop and carport. Natural gas available.

Type : House
Building Size : 13 sqm
Land Size : 817 sqm
View : <https://www.kennedyandhunt.com.au/sale/vic/macedon-ranges/new-gisborne/residential/house/5848637>



Drawing is for illustration purposes only. Not drawn to scale. All measurements are approximate only.