

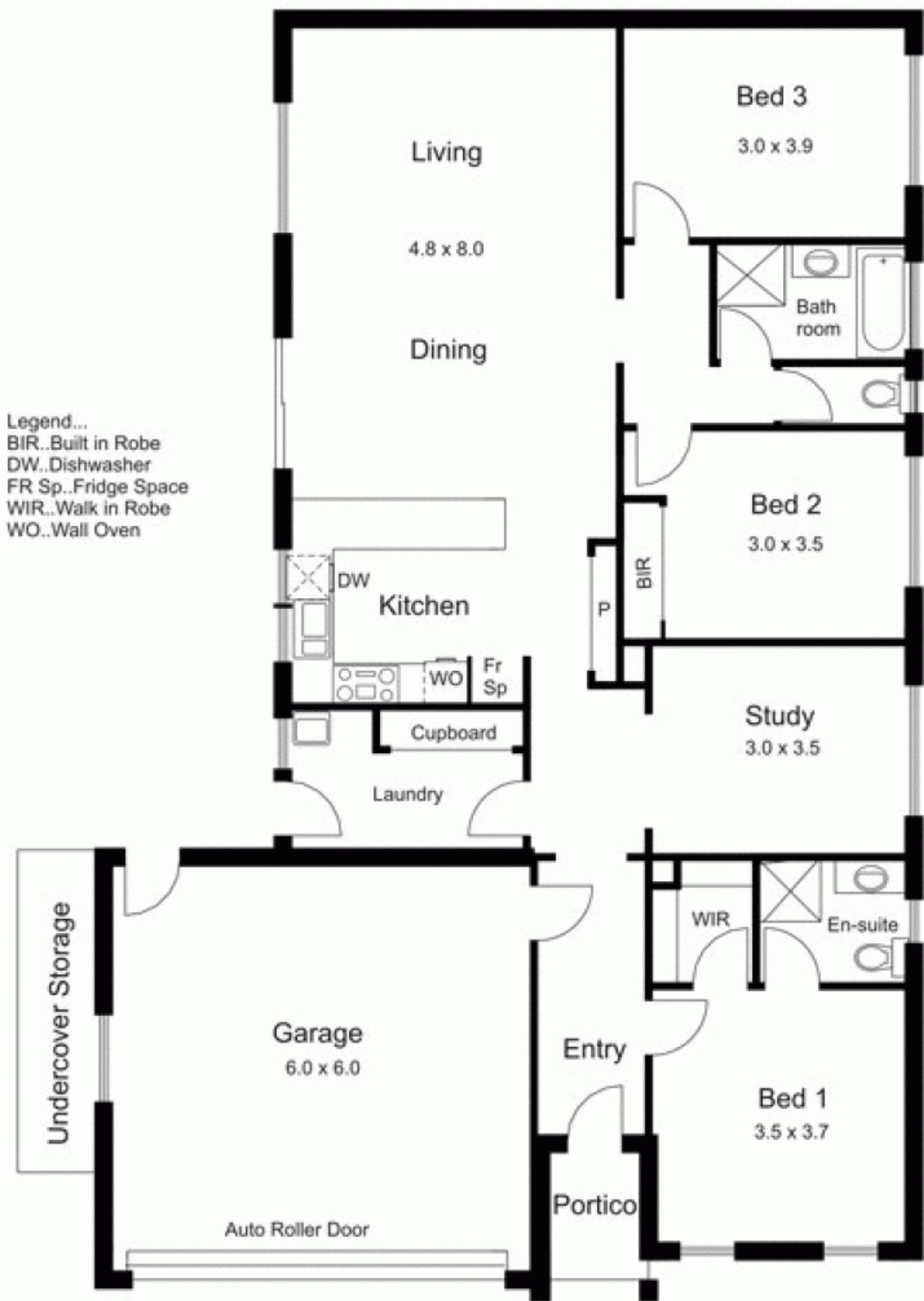


10 Vernon Close NEW GISBORNE VIC

3 2 2

Floorplan offers large open plan kitchen/dining/living room, three good sized bedrooms, study, ensuite and family bathroom. Neutral colour scheme. Natural gas appliances. Fully integrated double garage. New neighbourhood within easy reach of train station, primary schools and freeway access. All the hard work is done move in and finish the dream!

Type : House
Building Size : 18 sqm
Land Size : 593 sqm
View : <https://www.kennedyandhunt.com.au/sale/vic/macedon-ranges/new-gisborne/residential/house/5848640>



Drawing is for illustration purposes only. Not drawn to scale. All measurements are approximate only.