



201 Panorama Drive GISBORNE VIC

4 2 2

North facing family residence with 4 bedrooms, full ensuite, 2 living areas plus multi purpose craft or recreational area. Lovely mature garden setting. 5 bay lock up shed. Town water and tanks. A well maintained country property. A new lifestyle awaits.

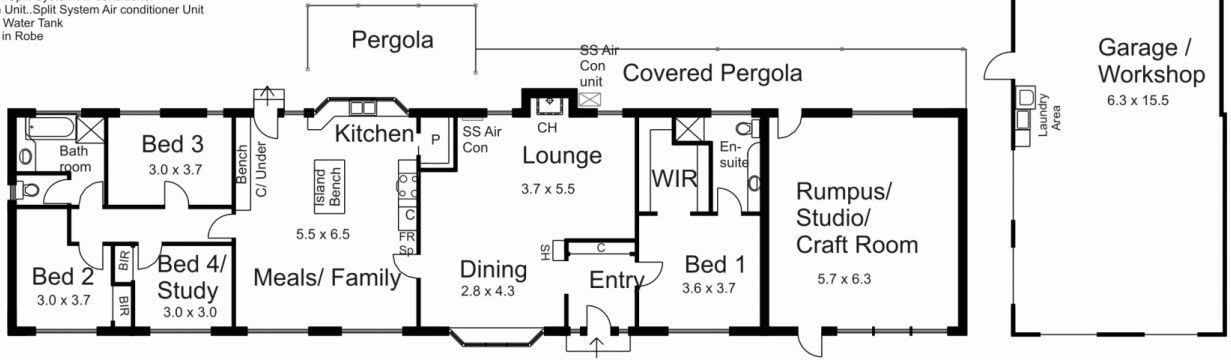
Type : Acreage/Semi-Rural
Building Size : 24 sqm
Land Size : 21300 sqm
View : <https://www.kennedyandhunt.com.au/sale/vic/macedon-ranges/gisborne/residential/acreagesemirural/5848664>

Legend.....
 BIR..Built in Robe
 C..Cupboard
 CH..Combustion Heater
 P..Pantry
 SH..Shelving
 SS Air Con...Split System Air conditioner
 SS Air Con Unit..Split System Air conditioner Unit
 RWT..Rain Water Tank
 WIR..Walk in Robe

RWT
25,000 L

RWT
18,000 L

RWT
25,000 L



Drawing is for illustration purposes . Not drawn to scale. All measurements are approximate only.