

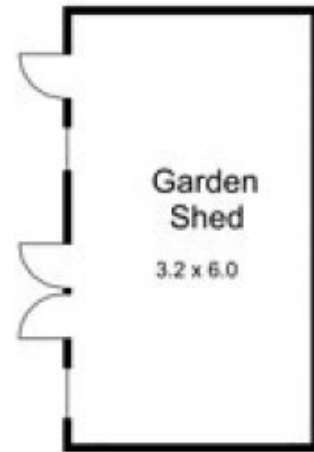


15 Carbine Court NEW GISBORNE VIC

3 2 2

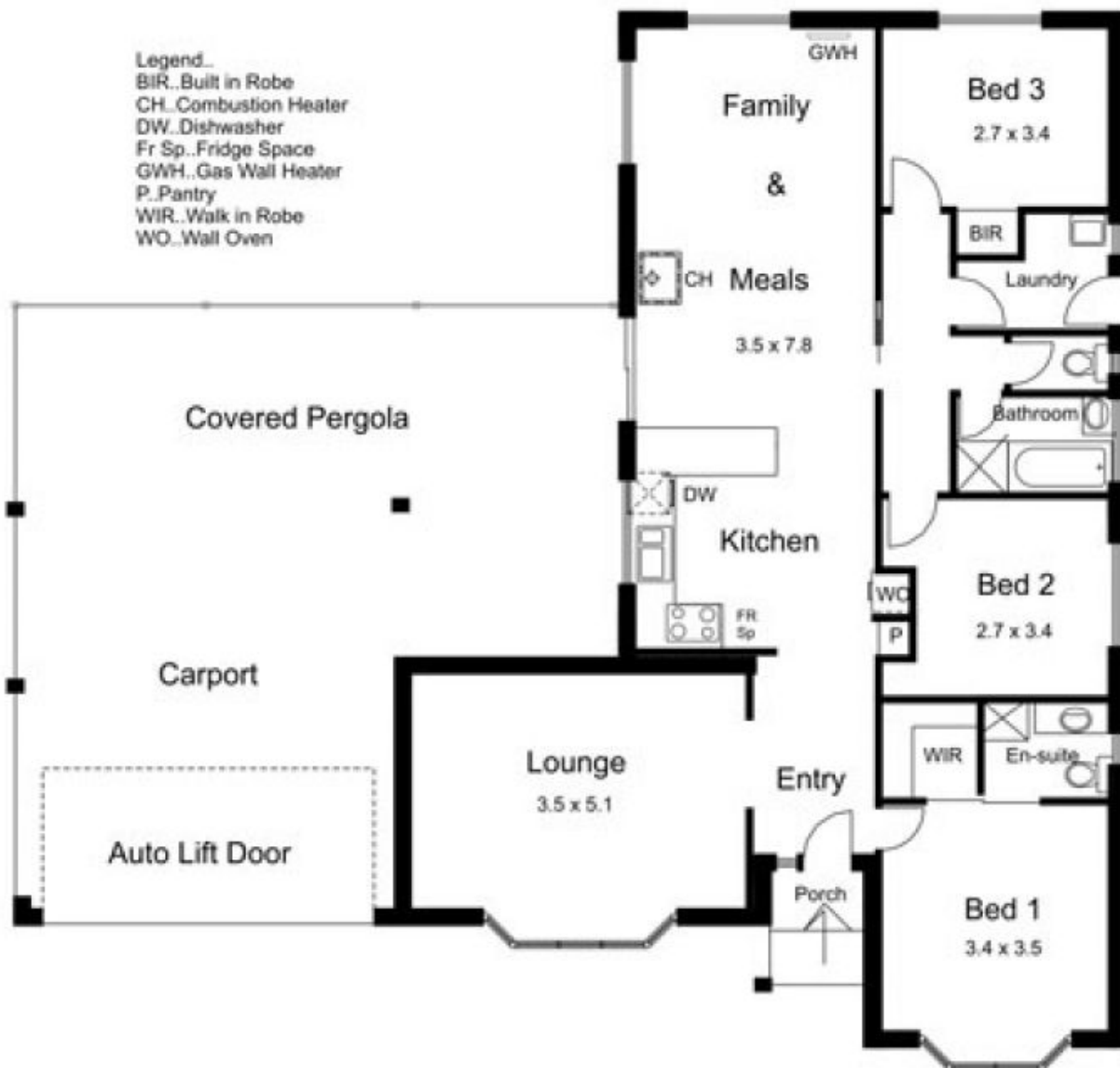
Rendered brick veneer residence offering 3 bedrooms, ensuite, formal front entry, lounge & dining room. Modern kitchen includes character timber bench tops, dishwasher. Gas and wood heating. Evaporative cooling. Natural gas connected. Dual car accommodation. Double garden shed. Subject to tenancy rent \$1,390 p.c.m., expires 20/10/12.

Type : House
Building Size : 15 sqm
Land Size : 851 sqm
View : <https://www.kennedyandhunt.com.au/sale/vic/macedon-ranges/new-gisborne/residential/house/5848685>



Not in actual position to house.

- Legend
 BIR..Built in Robe
 CH..Combustion Heater
 DW..Dishwasher
 Fr Sp..Fridge Space
 GWH..Gas Wall Heater
 P..Pantry
 WIR..Walk in Robe
 WO..Wall Oven



Drawing is for illustration purposes only. Not drawn to scale. All measurements are approximate only.