

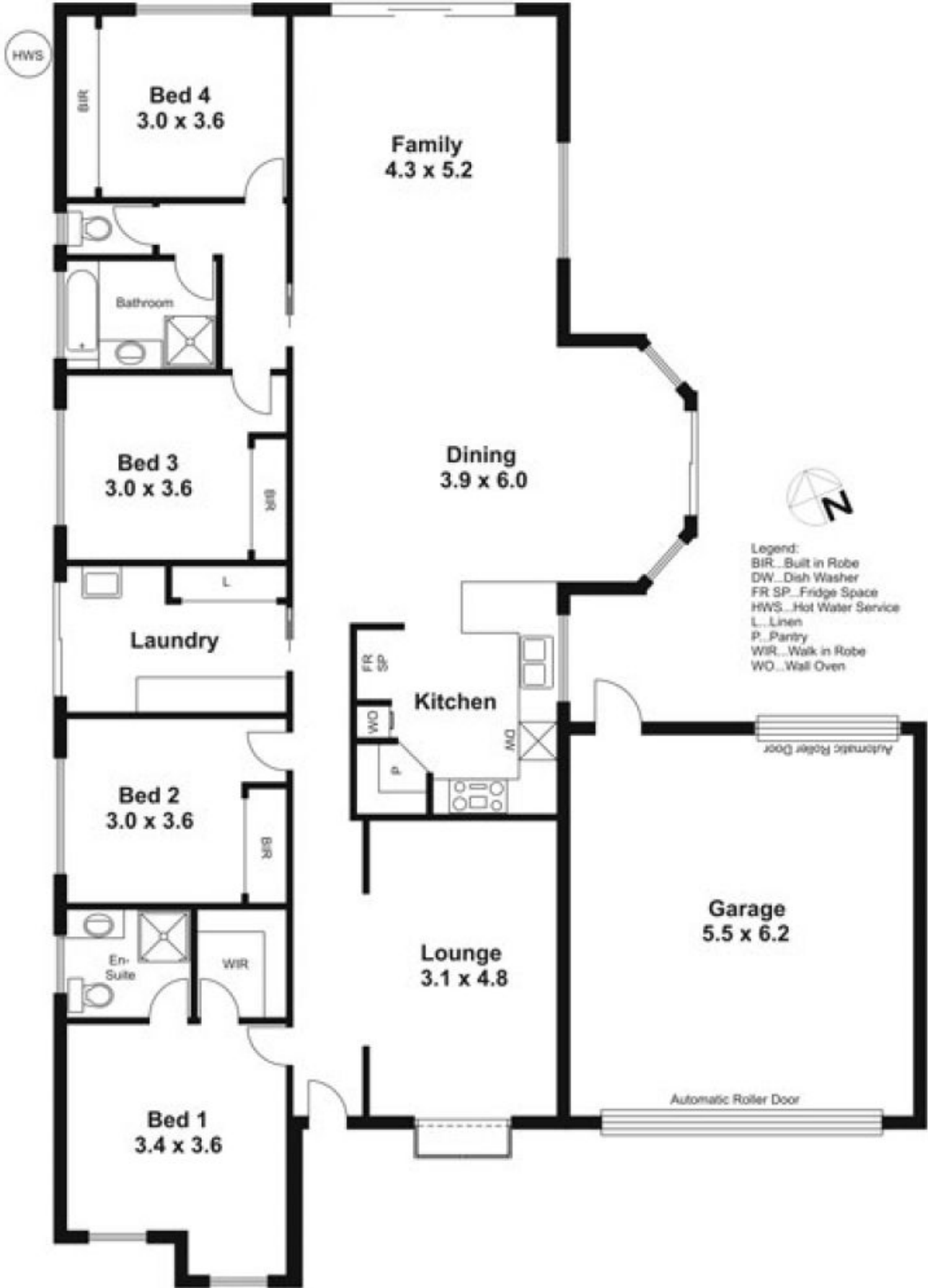


59 Sunny Park Close GISBORNE VIC

4 2 2

This property is well located at the end of the street and has stunning visual appeal. Well thought out gardens really make this home stand out. Accommodation comprises 4 bedrooms, ensuite, formal lounge and large kitchen/meals/living space. A really delightful home that is sure to impress the market place!

Type : House
Building Size : 20 sqm
Land Size : 677 sqm
View : <https://www.kennedyandhunt.com.au/sale/vic/macedon-ranges/gisborne/residential/house/5848690>



Drawing for illustration purposes only. Not drawn to scale. All measurements are approximate only.