

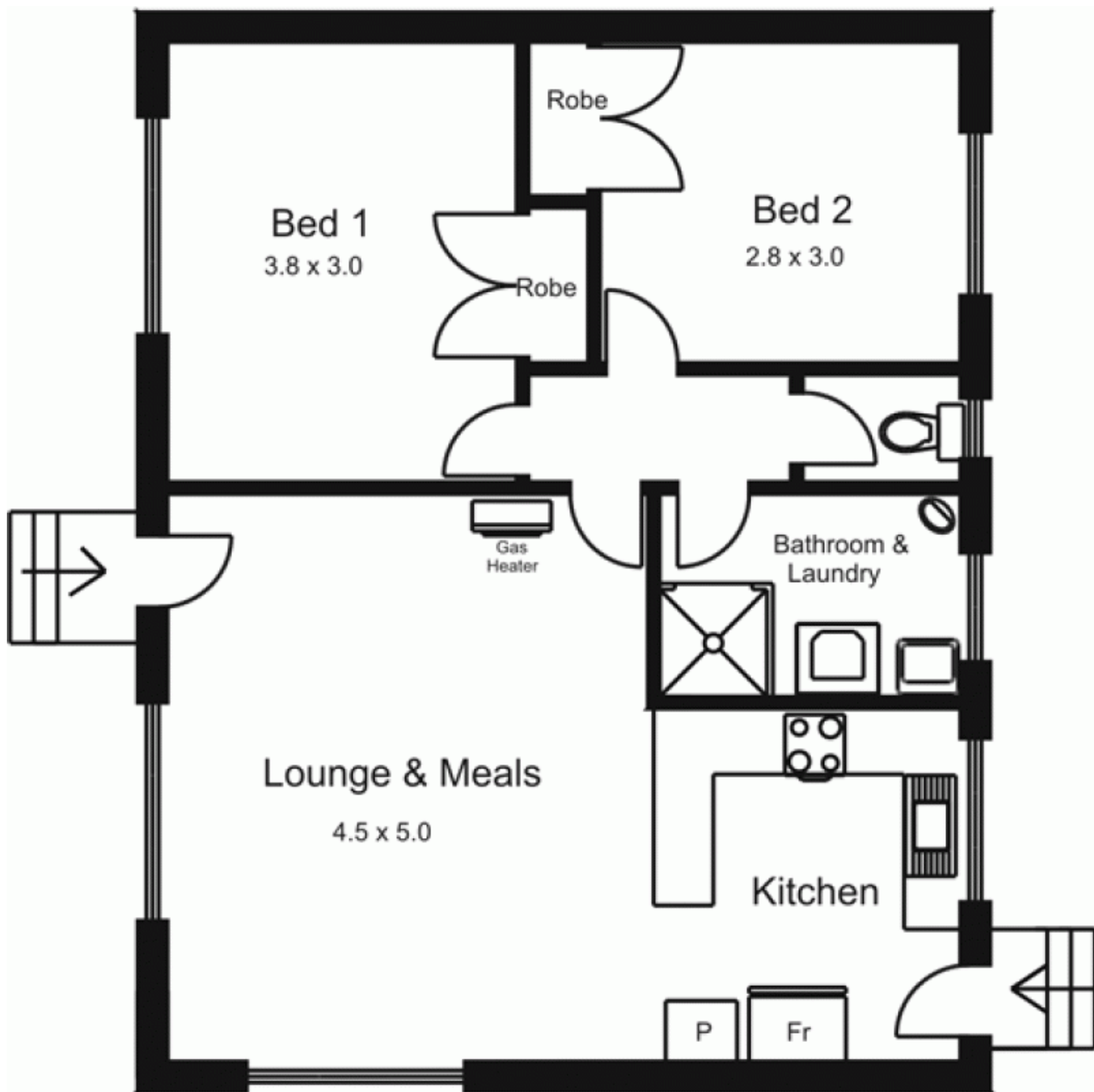


25 Worcester Road GISBORNE VIC

2 1 4

Already subdivided - 4 separate titles
 All units currently let
 Established & convenient residential location
 An affordable & rare opportunity for small
 investor/developer/syndicate
 Enquire today

Type : Block of Units
Building Size : 7 sqm
Land Size : 1056 sqm
View : <https://www.kennedyandhunt.com.au/sale/vic/macedon-ranges/gisborne/residential/block-of-units/5848696>



All measurements are approximate only. Not drawn to scale.

This plan is typical of all units