

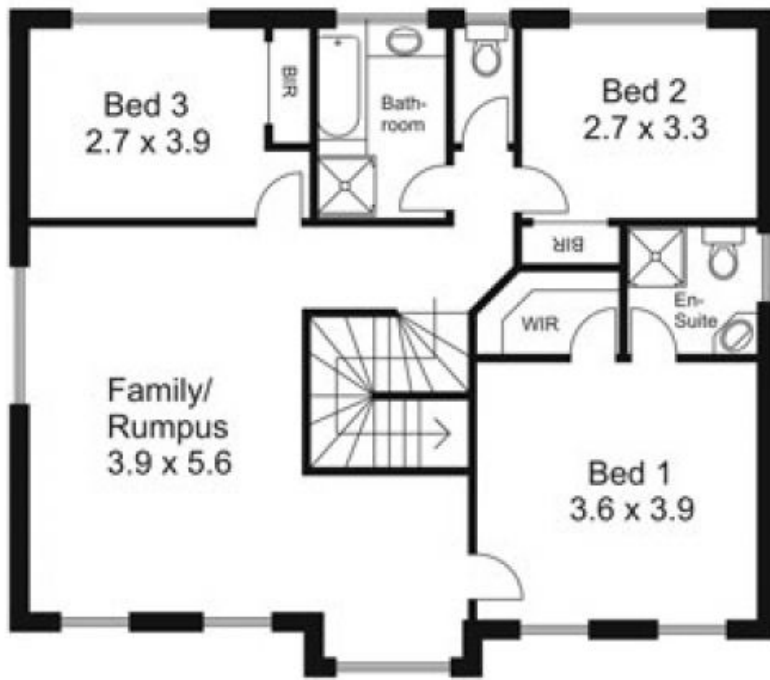


**17 Sunny Park Close GISBORNE VIC**

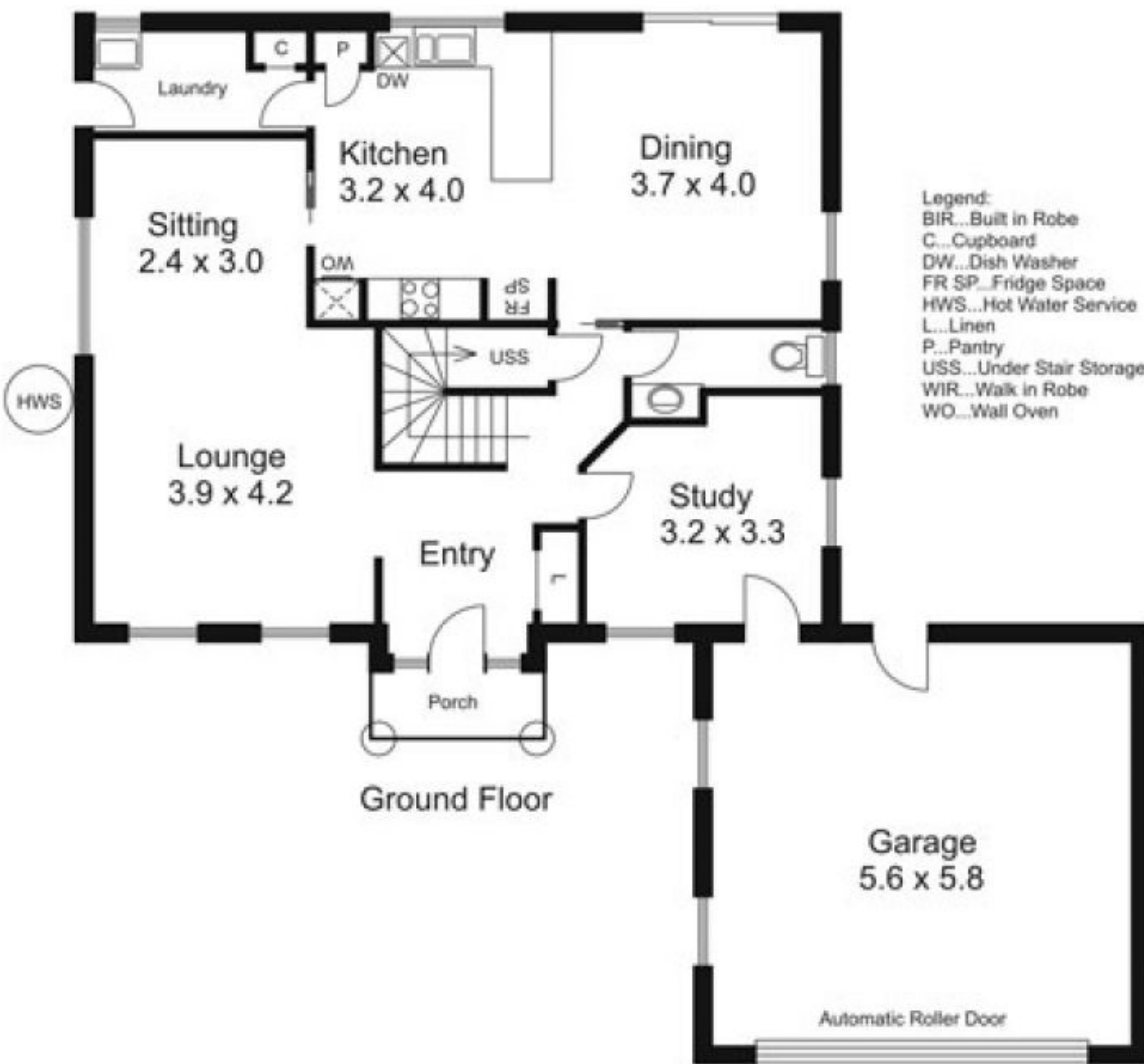
3 2 2

Freshly presented, the home offers spacious accommodation comprising entry foyer, three bedrooms and study or fourth bedroom, lounge, kitchen/meals/family room, upstairs rumpus area, ensuite, family bathroom and powder room. Double garage. Fittings include natural gas central heating, dishwasher and new carpets throughout. Low maintenance garden. Just what your family is looking for!

**Type** : House  
**Building Size** : 18 sqm  
**Land Size** : 651 sqm  
**View** : <https://www.kennedyandhunt.com.au/sale/vic/macedon-ranges/gisborne/residential/house/5848713>



First Floor



Ground Floor

- Legend:
- BIR...Built in Robe
  - C...Cupboard
  - DW...Dish Washer
  - FR SP...Fridge Space
  - HWS...Hot Water Service
  - L...Linen
  - P...Pantry
  - USS...Under Stair Storage
  - WIR...Walk in Robe
  - WO...Wall Oven