



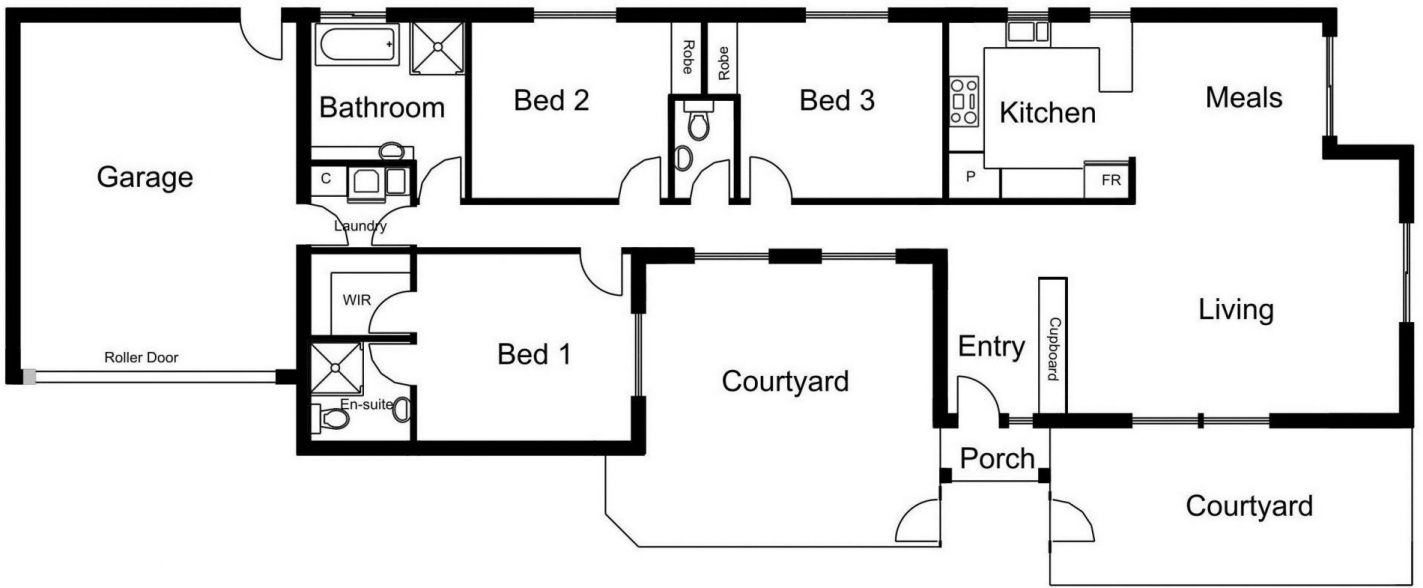
**5/2 Larter Court RIDDELLS CREEK VIC**

3 2 2

Approximately 12 months young. Bright open plan living. Gas ducted heating/ducted cooling, 2.7m ceilings, large well equipped kitchen, auto garage door. Protected courtyard. Lots of space, minimum work.

**Type** : Unit  
**Building Size** : 15 sqm  
**Land Size** : 400 sqm  
**View** : <https://www.kennedyandhunt.com.au/sale/vic/macedon-ranges/riddells-creek/residential/unit/5848716>

# Unit 5



Drawing is for illustration purposes only. Not drawn to scale.