

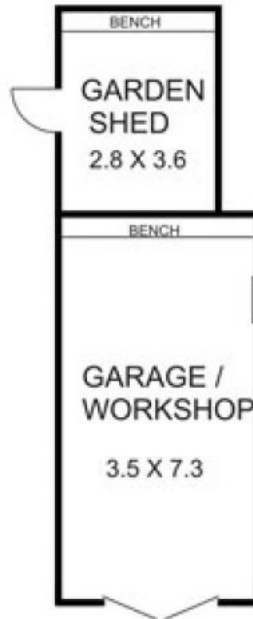
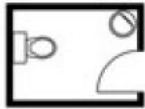


**192 Station Road NEW GISBORNE VIC**

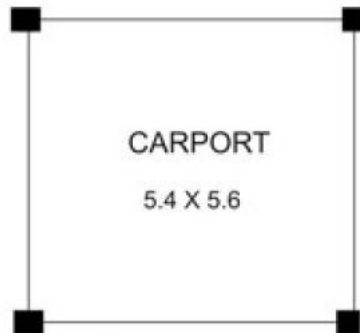
2 1 3

Neat and tidy older style brick veneer home with hardwood floors, natural gas ducted heating and lots of character. Both bathroom (with spa) and kitchen renovated in recent years. Covered pergola, double carport and steel garage. Convenient to Station. Subdivisional potential (S.T.C.A.).

**Type** : House  
**Building Size** : 12 sqm  
**Land Size** : 790 sqm  
**View** : <https://www.kennedyandhunt.com.au/sale/vic/macedon-ranges/new-gisborne/residential/house/5848722>



NOTE....OUTBUILDINGS NOT IN ACTUAL POSITION TO HOUSE



LEGEND....  
BIR. BUILT IN ROBE  
C. CUPBOARD  
FR SP. FRIDGE SPACE  
HWS. HOT WATER SERVICE  
L DRY. LAUNDRY  
L. LINEN  
R. ROBE

