



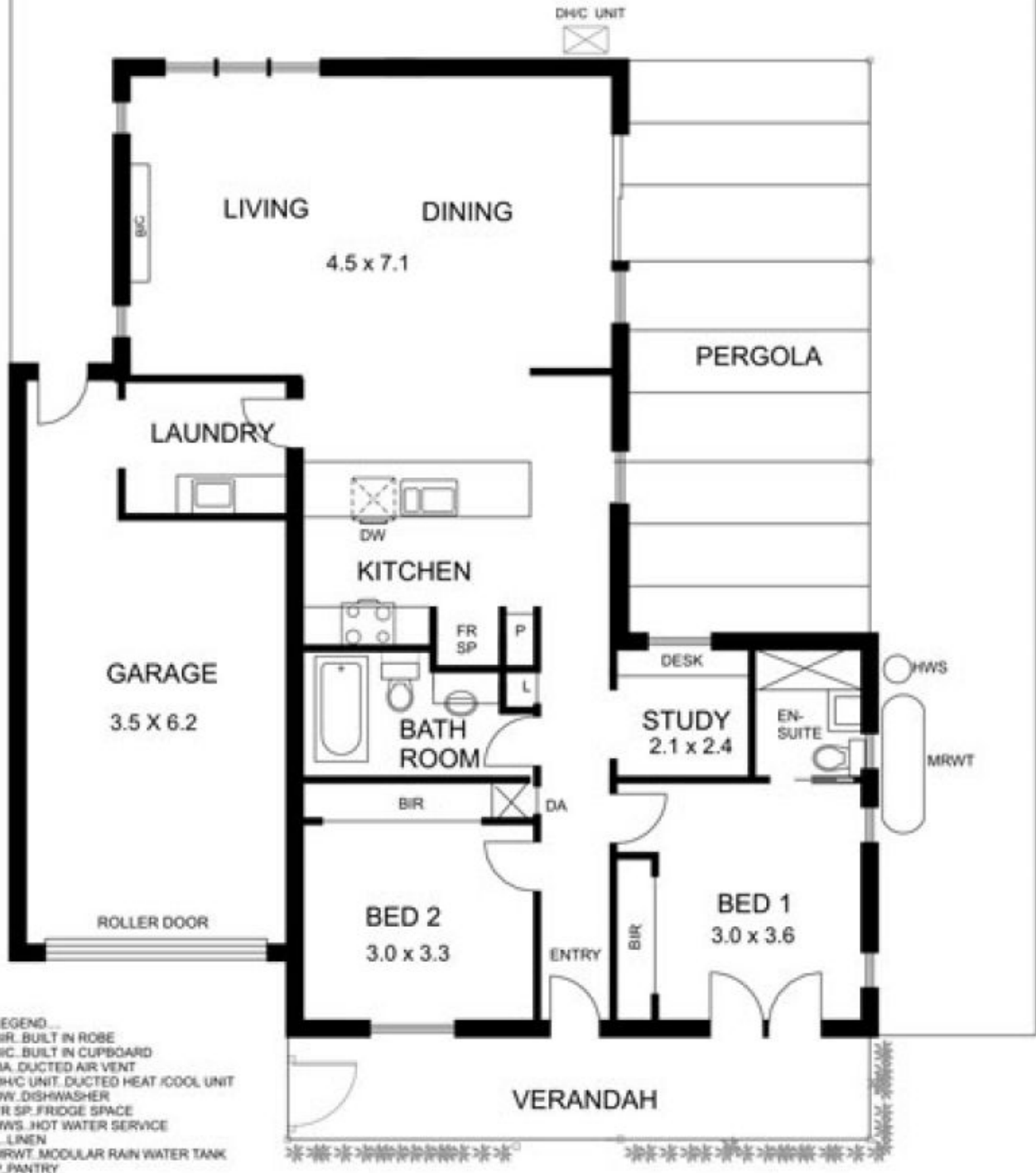
18 Zeal Street NEW GISBORNE VIC

2 2 1

Peaceful and private location. Bright & airy with 2 bedrooms (ensuite), study, full size kitchen with adjoining open plan living overlooking sunny pergola/barbeque area and garden. All the benefits of a house with the ease of a unit. Maybe just what you need!

Type : Unit
Building Size : 12 sqm
Land Size : 349 sqm
View : <https://www.kennedyandhunt.com.au/sale/vic/macedon-ranges/new-gisborne/residential/unit/5848731>

GARDEN
SHED
1.7 X 2.3



DRAWING IS FOR ILLUSTRATION PURPOSES ONLY. NOT DRAWN TO SCALE. ALL MEASUREMENTS ARE APPROXIMATE ONLY.