

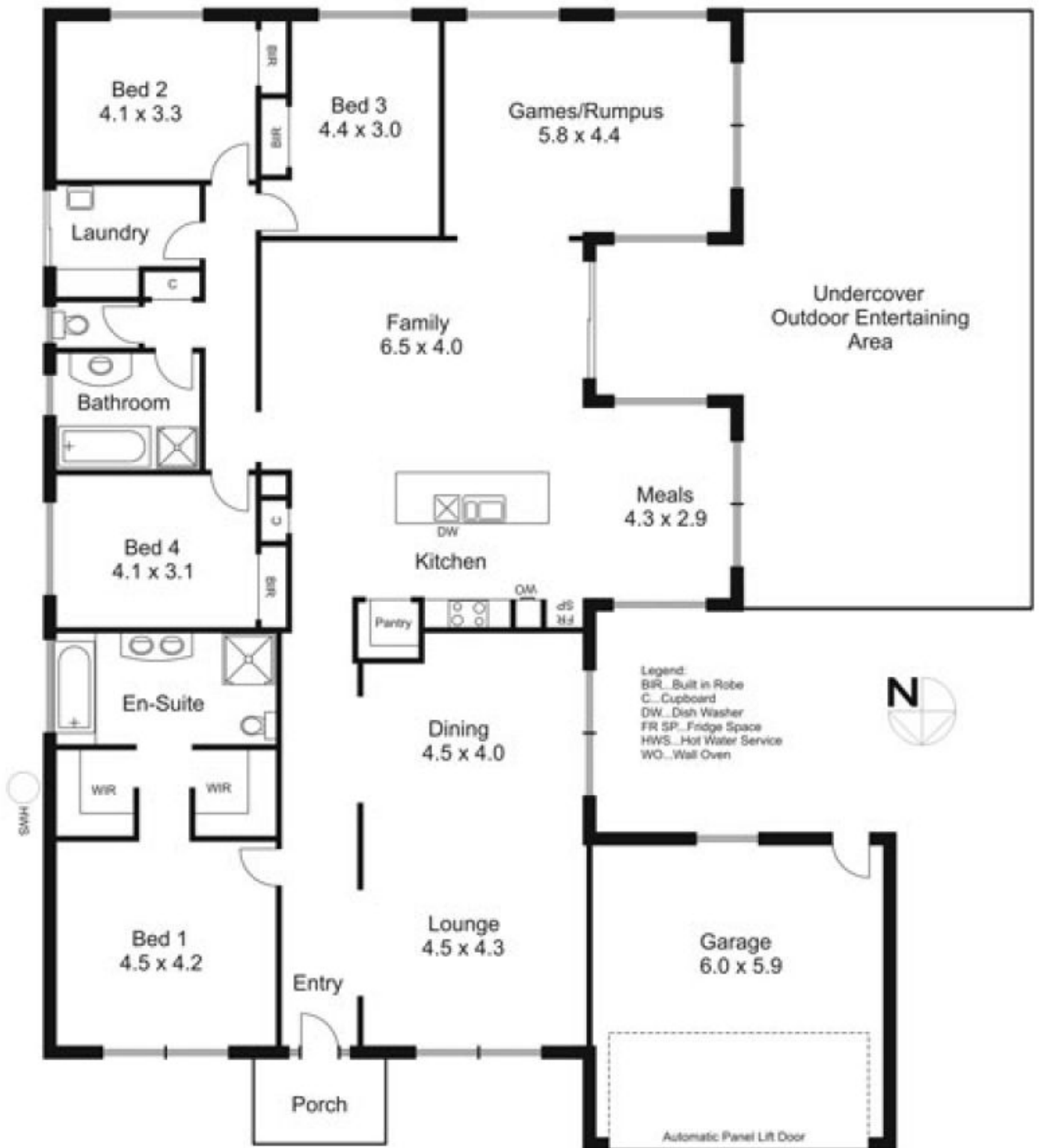


**10 Hyperno Court NEW GISBORNE VIC**

4 2 2

Bright & airy with 4 large bedrooms, full ensuite, 3 living areas & fantastic pergola. Natural gas ducted heating & wood heater. Convenient to station, bus and primary schools. Quiet location adjacent reserve.

**Type** : House  
**Building Size** : 26 sqm  
**Land Size** : 1230 sqm  
**View** : <https://www.kennedyandhunt.com.au/sale/vic/macedon-ranges/new-gisborne/residential/house/5848736>



Drawing for illustration purposes only. Not drawn to scale. All measurements are approximate only.